

 **KAMEI CORPORATION**
www.kamei.co.jp



 **KAMEI CORPORATION**

We will aim for further growth by meeting the varied needs of our customers and contributing to local communities.

The Kamei Corporation started business as a general merchandise store in 1903 in Shiogama, Miyagi, and has continued to grow for over a century. Now as a general trading company with over 100 locations in Japan and throughout the globe, we have businesses in the fields of energy, food, construction, automotive, overseas trade, pets, and pharmacies.

In a society that is drastically changing at a pace that exceeds our imagination, it is challenging to see what is coming due to various reasons such as unforeseen pandemics and geopolitical risks, and sometimes we have to face up to problems that do not have an answer. To address these problems, we need to have a multifaceted perspective and proceed strategically to respond flexibly and quickly to anything we face. We will work towards realizing a sustainable society while continuing to evolve so that we can foresee the trends of the times and accurately respond to change without being bound by preconceived notions.

We will come together as a company and continue to make steady progress toward becoming a company that is trusted and needed by local communities. We look forward to your continued guidance and support.

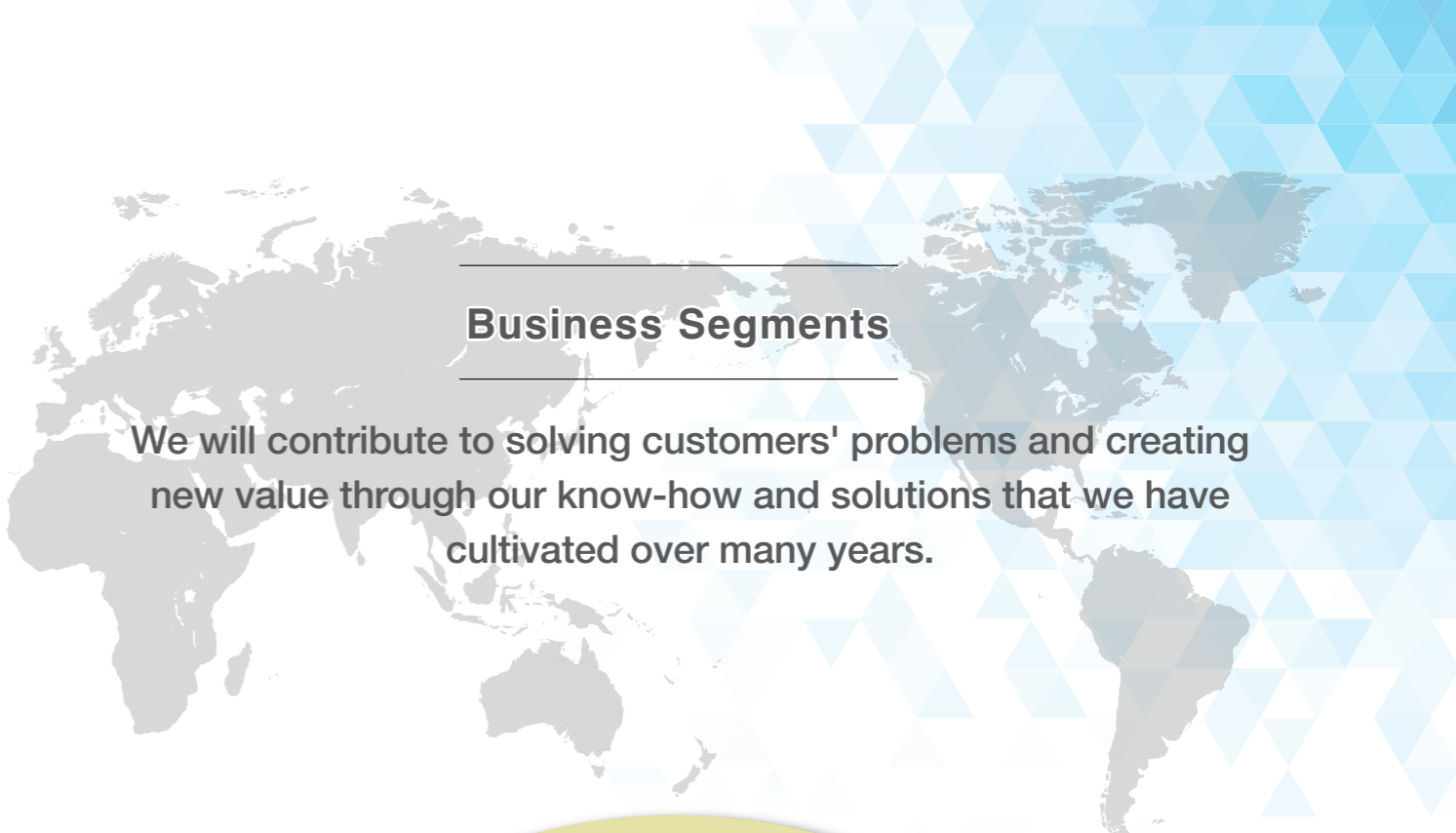
Kamei Corporation
 Representative Director, Chairman and CEO, Fumi-yuki Kamei
 Representative Director, President, Akio Kamei



Representative Director,
 Chairman and CEO,
 Fumi-yuki Kamei



Representative Director,
 President,
 Akio Kamei



BUSINESS SEGMENT

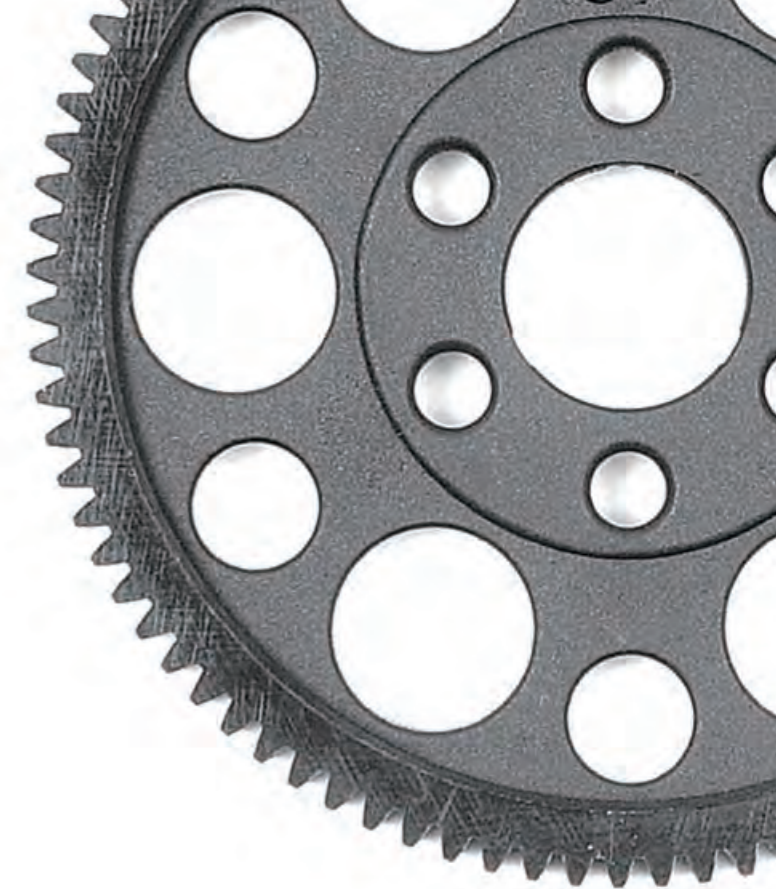
Corporate Sales Division

Your one-stop solution for the products and systems you desire

In order to keep pace with today's rapid changes in the business environment, we have integrated our services for corporate customers into the Corporate Sales Division. By enhancing our organization to enable a more comprehensive provision of a wide range of product information related to diverse areas - including energy, industrial materials and equipment, office environment, systems and insurance - we can respond to complex customer needs in various aspects of manufacturing, logistics and office work. Furthermore, by developing new products and promoting new business both domestically and internationally, we are able to propose original solutions.

Products and Services

| | |
|---|---|
| Oil | Gasoline, jet fuel, kerosene, diesel fuel, heavy oils A, B and C, biofuel |
| Gas | Liquefied natural gas, propane, butane, automobile gas, LNG/LPG plants |
| Lubricants | Automotive/industrial/marine lubricants, grease, paraffin, food machinery lubricants, eco-friendly lubricants |
| Industrial materials and equipment | Straight asphalt, logistics materials, industrial detergents, paper products, industrial uniforms, high-efficiency boilers, compressors, generators, cogeneration systems, Karcher products, bag filters, cartridge filters |
| Office supplies | Multifunction printers, other printers, personal computers, office servers, communication equipment, office layout design, office fixtures, electrical and telecommunication work, confidential document processing, office supplies (Askul), other supplies |
| Systems | Digital transformation (DX) solutions, business systems, information security systems, mobile apps, internal networks, security cameras |
| Chemicals | Inorganic industrial chemicals, organic industrial chemicals, water-treatment agents, alcohol, films, resin ingredients, resin moldings, cleaning agents, specialty paints |
| Energy conservation | LED lighting, LED lamps for high ceilings, LED streetlights, Eco Pumps, energy-saving coolant pipe fittings |
| Energy generation | Solar power generation systems, storage batteries, fuel cells, small wind power generation systems |
| Disaster prevention | Building Structural Health Monitoring System (q-NAVIGATOR), Emergency earthquake warning systems (Takusu), fire extinguishers, fire-extinguishing equipment, disaster relief products, private fueling equipment, oil dispersants, Fire risk diagnosis, water stops |
| Insurance(Agency) | Liability insurance, general corporate assets insurance, car insurance, accident insurance, expense insurance, credit insurance, health insurance, cancer insurance, whole life insurance, term insurance, endowment insurance |



Corporate Sales Division - Solutions

Using our collective strengths fostered over many years, we provide one-stop solutions to resolve your issues.

We offer a truly comprehensive and multifaceted one-stop solution service by effectively utilizing the enormous amount of products, information and human resources we have acquired over the past century. By focusing on the development of new products with high functionality and high added value which will meet future needs and respond to future issues, we are able to continuously make customer-oriented proposals.



■ Safety

We provide an emergency earthquake warning system (Takusu), a building-damage assessment monitoring system for after an earthquake (q-NAVIGATOR), and disaster-prevention products including fire extinguishers and fire extinguishing systems, to ensure our customers' sense of security and safety.



■ Insurance

We offer a wide range of insurance products to customers as a general insurance planner.



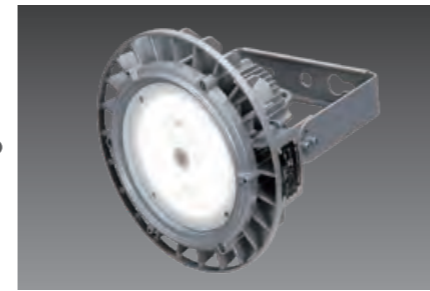
■ Systems

We propose optimum ICT solutions and services, ranging from system development to installation to follow up service.



■ Office supplies

We offer office-related products in line with customers' expectations for environmental awareness, convenience and security.



■ Energy conservation

We offer eco-friendly products such as LED lighting and Eco Pumps.



■ Energy generation

We provide energy management-related products including solar-power generation systems, lithium-ion storage batteries, etc.



■ Lubricants

We supply eco-friendly and energy-saving automobile and industrial lubricants.



■ Chemicals

We offer chemical products such as industrial chemicals, water-treatment agents, alcohol, etc. according to customer needs.



■ Industrial materials and equipment

We respond to different customer needs by offering logistics materials, compressors, generators, Karcher products, etc.



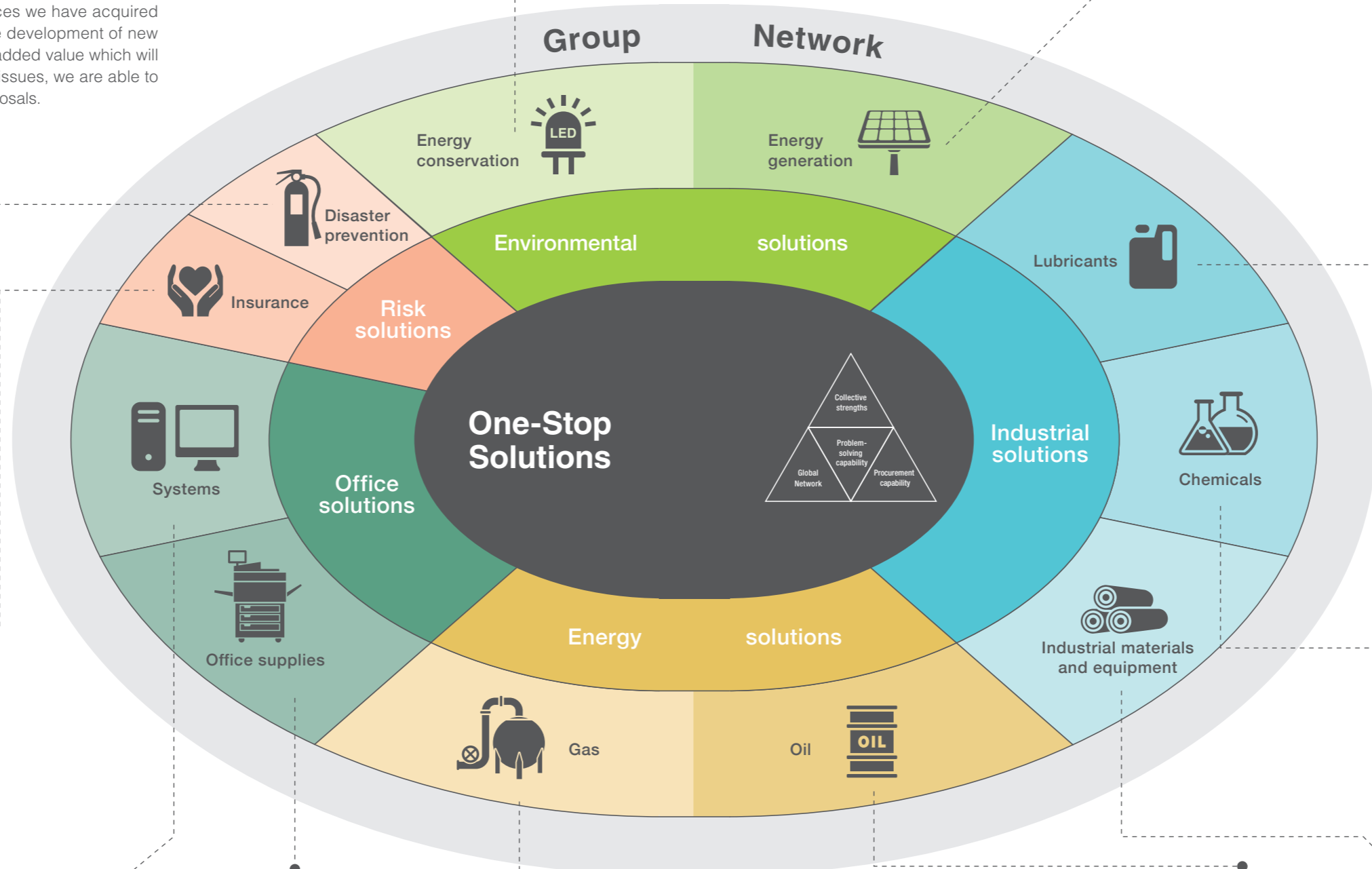
■ Gas

We provide a stable supply of LNG and LPG, which are environmentally friendly energy sources.



■ Oil

We strive to provide a stable supply of oil products by building extensive storage facilities and utilizing our proprietary logistics networks.



Residential Division

From home-use energy to living space design, we are helping to realize comfortable lifestyles.

Kamei offers a wide range of products and services including regular deliveries of LPG and kerosene to support and enrich people's daily lives. Furthermore, as a partner that plans and designs living spaces, we make optimum proposals in accordance with the family composition and lifestyle of customers, using eco-friendly next-generation energy systems and a broad lineup of products exclusive to trading companies such as Kamei. We have a comprehensive organization capable of offering more comfortable living spaces.



Home energy

[Home]

●LPG

We leverage one of the best supply and distribution networks in the Tohoku region to provide safe and secure home-use propane gas to our customers. LPG is an environmentally friendly energy source that has low CO2 emissions. LPG is expected to play an important role as a resilient energy from the experiences of various disasters that have occurred in recent years.

●The Hotline (kerosene delivery service)

The Hotline delivers home-use kerosene to our customers' home storage tanks and containers. Customers can choose freely from a range of delivery options such as regular delivery and on-demand delivery when needed only, according to their usage. Because delivery is all year round, customers can be sure of their kerosene supply, not only for heating but also for hot water.



●Gas equipment and energy saving products

From the environment-friendly and household budget-friendly Ene-Farm hybrid water heater, to powerful and cosy gas hot water underfloor heating, built-in gas burners equipped with the very latest functions, and the gas powered clothes dryer "Kanta-kun" for fast drying that contributes to shortening housework times, we offer a range of fabulous products designed to match our customers' lifestyles.



●Other services

We offer various types of benefits to our customers, such as the monthly "Smile Set Discount" for customers who use electricity* and Kamei LPG together as a set, and Rakuten Points that customers can earn through their LPG and The Hotline payments.



*In the six Tohoku prefectures, this is the Tohoku Electric Power electricity payment plan (Yorisou + Family Value).
*In the Kanto region, this is the "ENEOS Power Corporation's electricity (ENEOS Denki).

[Commercial and industrial]

●LPG (GHP, industrial boilers, private generators)

We offer LPG supply systems and equipment for factories, hospitals, welfare facilities, and accommodation facilities, and the like. We deliver a wide variety of products tailored to customer needs, including gas-engine heat pump (GHP) air conditioning systems, which are ideal for reducing power demand peaks and achieving energy and cost savings; high-efficiency and high-performance commercial boilers with advanced functionality; and electric power generators for business continuity plans (BCP) in case of emergency. We also enable productivity and quality improvements by proposing gas systems tailored to the specific industry and operational scale of customers, for example to boost the efficiency and cut the maintenance costs of facilities by converting to LPG fuel or by adopting new equipment or upgrading existing equipment.



●Disaster response bulk supply

With the increase in natural disasters that we have seen in recent years, LPG is attracting a lot of attention for its strong disaster-resilience. Disaster response bulk supply means that, in addition to the ordinary gas supply, even in the event of disaster, gas can be supplied for cooking, hot water, air conditioning and electricity generation, etc. We also provide consulting services for all kinds of subsidy applications, which means that we can help in the reduction of initial costs, optimal BCP countermeasures and the renewal of plant and equipment.



Housing related businesses

●Housing related wholesale

We leverage our network of trading relationships with many different kinds of manufacturers in Japan and overseas to be able to propose solutions for plumbing related equipment, such as system kitchens, system baths, toilets, etc., as well as solutions for hot water supply, air conditioning, interior and exterior decoration materials and fittings, etc., to house builders, construction companies and architects, etc. We propose a wide range of products to meet our customers living space needs.



●Renovations

With Kamei's unique and rich product lineup and construction know-how, we can prepare proposals for a variety of types of renovations and material and construction costs. By providing a total range of support for all kinds of renovation, from detached homes to apartments, etc., we deliver tailor made solutions to our customers and work to deliver high quality housing for the future.

Products and Services

| | |
|--|---|
| Gas | Propane, butane, automobile gas, liquefied natural gas |
| Kerosene delivery service | The Hotline |
| Community gas utility business | |
| LPG equipment | Household fuel cells (Ene-Farm), Ecowill, gas hot water heaters, bathtub gas water heaters, on demand gas hot water heaters, gas ranges, stove burners, gas rice cookers, gas ovens, gas forced air furnaces, gas fan heaters, gas stoves, gas heat pump (GHP) air conditioners, gas far-infrared heaters, gas driers, gas bathroom heaters and driers, kitchen equipment for restaurants, heaters for chicken and pig farming, carbon dioxide generators for agricultural and horticultural use, industrial furnaces and warm-air generators |
| LPG supply equipment | LPG containers, bulk containers, bulk storage tanks, regulators, gas meters, gas leak detectors, vaporizers, hoses and valves, gas valves |
| Design and construction of LPG equipment and piping | Home/commercial/industrial-use equipment and piping, community gas utility business, bulk supply systems |
| Commercial design and construction | Kitchens, heating, air-conditioning systems |
| LPG centralized monitoring systems | |
| Other commodity products | Oil heaters, general air-conditioning equipment, general hot-water supply equipment, other electrical appliances |
| Eco-friendly equipment, air-conditioning and other "all electric" equipment | Solar-power generation systems, environmental conservation and disaster-prevention equipment, EcoCute, IH cooking heaters, electric storage heaters, electric floor-heating systems, room air conditioners, all-in-one air-conditioning systems, 24/7 ventilation systems, lighting equipment, home elevators |
| Housing equipment | Built-in kitchens, built-in baths, bathroom vanities, general kitchen equipment, general housing materials, interior materials, roofing materials, exterior wall materials, exterior items, earthquake resistant IT dampers, home-security equipment |
| Sanitary equipment | General sanitary equipment, washlets, septic tanks |
| Renovations and related products | General renovations, water-supply system renovations, interiors, exterior walls, roofing, assembly and installation of equipment, house additions |

Carlife Division

Supporting a comfortable carlife with reliable technical capabilities and services

The environment surrounding automobiles is changing rapidly due to the spread of hybrid cars, electric vehicles and car-sharing services. In response to the rapid changes of the times, the Carlife Division is not only enhancing its inspection, maintenance and support systems, but is also responding to a wide range of customer needs such as coatings, platings and other autobody issues. In addition, while bearing in mind the general lifestyles related to cars, we generate a comfortable and safe carlife by among other things, developing next-generation service stations which can also be used as temporary emergency shelters for local residents in the event of a tsunami, earthquake, or other disaster.



Service stations (Gas stations)

Kamei has a nationwide network of directly-run service stations and exclusive distributors. We fully support a comfortable and safe carlife not just by offering refueling services, but also by providing regular maintenance such as car washes, tire changes and oil changes, as well as safety inspections, vehicle inspections, coatings, minor auto body repairs, and other maintenance work.

Car coating & wash stores

With top-class skills and high-quality facilities that only our specialty stores can offer, a wide variety of services are available, such as KeePer and other coatings, hand car washing, and car interior cleaning, to provide you with a reliable cleanliness.



Car leasing

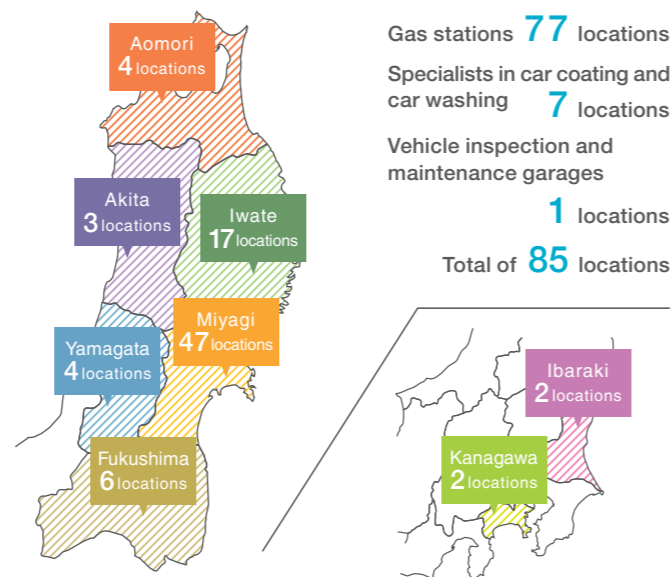
Corporate leasing

We support your business management by reducing the human, economic, and time burdens associated with company car maintenance. Our service covers many different types of vehicles, including commercial vans, delivery trucks, and luxury sedans.

Personal leasing

For individuals, our leasing plans allow you to more easily have a new car, with a fixed monthly fee including taxes and other expenses during your contract period, with no initial deposit.

Kamei Service Station network



Products and Services

| | |
|-------------------------|--|
| Fuel oil | Gasoline, diesel fuel, kerosene |
| Tire products | Tires, aluminum wheels |
| Car wash and coatings | Hand car washing, drive-through car washes, body coatings |
| Oil products | Engine oil, transmission oil, oil filters |
| Maintenance | Vehicle inspections, regulatory inspections, oil changes, tire changes, general maintenance work |
| Minor auto body repairs | Body repairs, glass repairs |
| Parts | Batteries, air conditioner filters, windshield wipers and other auto parts |
| Car leasing | Corporate and individual leases, automobile sales |

Food Division

Offering quality foods and know-how from wholesale to retail

By utilizing our ability to analyze future market trends, we can precisely respond to rapidly-changing consumer needs and offer a stable supply of quality products. As a general food trading company, by integrating our domestic and international delivery of a wide variety of products (alcoholic beverages, soft drinks, food products, restaurant ingredients, processing ingredients, etc.) with our accumulated expertise and know-how, we produce winning strategies and tactics that lead the market.



Stable supply

As a general food trading company, we deliver a wide variety of products such as alcoholic beverages, soft drinks, food products, restaurant ingredients, processing ingredients, etc. from both domestic and international sources. Our vast experience in the food industry allows us to use our expertise to respond to changing customer needs and consistently offer a stable supply of quality products.

Beverages

We respond to our customers' beverage needs by supplying both domestic and international brand name beer, sake, shochu, wine, liqueur, etc., as well as our own private brand products, soft drinks and other beverages.



Special pure sake Hakuho

Food ingredients

We directly deliver processing ingredients, including rice, sugar, starch and cornstarch, to customers such as beverage and food manufacturers. In particular, the rice and other agricultural products which we produce under partnerships with premium domestic farms, have earned a great reputation for quality.

Total manufacturing, processing and sales processes

By leveraging the information gathering expertise that we have accumulated as a general trading company, we can support all aspects of the food businesses: from offering advice regarding production lines and processing through to the development of new products and sales channels. We have also launched Oishiimono Club, which is a mail-order business that selects delicious foods from the Tohoku region and introduces them nationwide.

Directly-run businesses

To accurately understand the changing needs of consumers, it is vital to hear the real voices and responses of customers on a daily basis. We gain valuable insight and data from our directly-run supermarkets and restaurants, and feed them back into the company to share and utilize in different aspects of the business.

- Green Mart
- Omotekoji
- Doutor Coffee Shops
- Ramen Santouka
- Chateraise



Products and Services

| | |
|----------------------------------|---|
| Alcoholic beverages | Sake, shochu, beer, happoshu (low-malt beer), wine, imported liquor, etc. |
| Household foods | Soft drinks, seasonings, processed foods, cooking oil, rice, etc. |
| Food ingredients for restaurants | Livestock, seafood and agricultural ingredients, as well as other processed foods |
| Food ingredients for processing | Sugar, wheat, fat, rice, etc. |
| Mail-order business | Oishiimono Club, etc. |
| Health care business | Nursing home food service, nursing care supplies, etc. |

Construction Division

A partner that utilizes its technical, construction and procurement capabilities to meet all your building needs.

We blend our 3 major capabilities; technical expertise, project execution, and material procurement, into one result; safe, high quality construction. As well, we are expanding the value chain in a wide range of areas such as architecture, infrastructure, and the environment. With increasingly high demands from our customers, we are continually advancing our expertise to realize our goal of creating a general engineering company which is a collection of specialized construction professionals.



Construction professionals

By cooperating with Kamei Engineering Co., Ltd., which retains first-class structural design architects, and Kamei Safety Partners (K-wa kai), which has high execution capabilities, we comprehensively consider design, execution, management and material procurement to propose optimum plans that take into account cost reduction, a shortened construction period, safety and the environment. By undertaking the entire process from steel frame work, which is our main product, to roofing and exterior wall construction, we save labor by eliminating wasteful and unnecessary elements in each work process.

Our commitment to carbon neutrality and the digital transformation of construction work

Since the launch of the FIT system in 2012, we have undertaken design and building of the foundations, mounting systems and panel installations of mega-solar projects. Our company also undertakes large-scale construction works of more than 100 MW, and the cumulative total of our construction work exceeds 1 GW. As we continue contributing to realizing a decarbonized world, we will proactively take initiative on self-consumption, PPA projects, and next-generation solar sharing as well as construction work with CO2 emission reduction in mind. For digital transformation of construction work, we will actively utilize digital technology and data, including steel-frame construction leveraging BIM, as well as ICT (Information and Communication Technology) measuring for civil engineering. We will improve safety and efficiency as well as dealing with the challenging issue of labor shortages.



Kamei Safety Partners (K-wa kai)

Kamei Safety Partners (K-wa kai) consist of about 250 companies all around Japan, including steel frame manufacturers, scaffolding workers, roofing contractors and autoclaved lightweight aerated concrete (ALC) contractors. They are actively working to realize high-quality and safe construction while placing top priority on safety management, quality control and compliance with laws and regulations.

Steel frame work

We engage in a wide range of construction projects from high-rise buildings and large logistics centers to aseismic reinforcement construction, which accumulates to more than 80,000 tons of construction work per year. We use our strength in precise construction diagrams, our construction power focusing on production management, our having more than 100 trusted steel mill partners, and our outstanding site management ability overseen by many experienced engineers to provide high quality construction work as a professional group.



Exterior wall construction

Focusing predominantly on ALC construction and extruded cement panel construction, our years of experience means that you can rely on our work. By utilizing our strength of being able to implement the entire process, from steel framework to exterior wall construction, we offer proposals that reduce costs and shorten construction periods.

Products and Services

- Construction work** Steel frame work, exterior cladding, reinforcement work, roofing, sheet metal work, piling, fire-resistant coatings, sash work, glass work, insulation, etc.
- Civil engineering materials** Concrete secondary products, aggregate, steel pipe piles, steel sheet piles, exterior landscaping products, floodgates, floodwall gates, etc.
- Environmental energy equipment** Design and installation of the foundation and mounting system of solar power plant and solar panels (Mega solar, solar sharing, car port style and more)
- Foundation and construction materials** Cement, fresh concrete, steel bars, interior and exterior materials, etc.
- New business** Steel basements, antiseismic reinforcement, system construction, laminated wood construction, etc.

Healthcare Division

As a health hub for community residents

The interest in healthy life expectancy, where people can live an active healthy life, is increasing as the aging population and heightened health awareness increases in society. As pharmaceutical professionals, our company comprehensively understands the health condition of the community residents and supports their healthy, beautiful, and remarkable lives by providing high quality healthcare services.



Pharmacy Business

Peace of mind, confidence, understanding, comfort

Nowadays, pharmacies are being more closely scrutinized as people increasingly take more control of their healthcare. Kamei Pharmacies offer high-quality healthcare services thanks to our knowledgeable and experienced staff.

Reliable and safe medical services

The main job of a pharmacy is to dispense medication based on doctors' prescriptions. As pharmaceutical experts, we aim to become a pharmacy trusted by patients, and which provides an atmosphere in which patients can comfortably consult with us about their anxieties and questions concerning drugs and health.

Detailed prescription usage instructions

We at Kamei Dispensing Pharmacy distribute appropriate personnel to each pharmacy, taking into consideration the number of patients in each pharmacy and what types of prescriptions need to be dispensed, in order to provide better medication usage instructions and to appropriately communicate with patients.

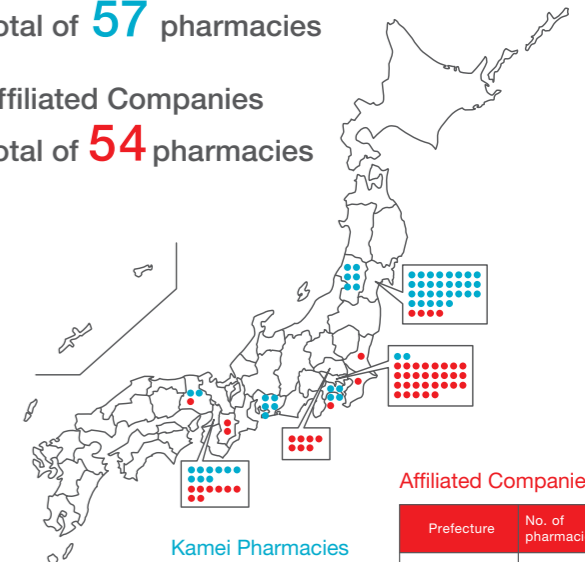
Thorough risk management

Kamei's pharmacies have introduced state of the art equipment to prevent dispensing errors. For added safety, prescriptions are always checked by several pharmacists to confirm accuracy before dispensing. We believe the implementation of a thorough risk management system is essential to ensure precise dispensing and to support the health of our patients.

Kamei pharmacy group

Kamei pharmacies
Total of **57** pharmacies

Affiliated Companies
Total of **54** pharmacies



Kamei Pharmacies

| Prefecture | No. of pharmacies |
|------------|-------------------|
| Miyagi | 29 |
| Yamagata | 6 |
| Tokyo | 2 |
| Kanagawa | 4 |
| Aichi | 5 |
| Osaka | 9 |
| Hyogo | 2 |

Affiliated Companies

| Prefecture | No. of pharmacies |
|------------|-------------------|
| Miyagi | 4 |
| Tokyo | 29 |
| Kanagawa | 1 |
| Saitama | 7 |
| Chiba | 1 |
| Ibaraki | 1 |
| Osaka | 8 |
| Hyogo | 1 |
| Nara | 2 |

KAMEI GROUP

Affiliated Companies

Overseas Affiliates

Kamei North America Co., Ltd.

1815 W. 213th Street, Suite 230, Torrance, CA, 90501, USA Tel: 1-310-782-1900 Fax: 1-310-782-7100

We oversee Kamei's operations in North America, including our subsidiaries: Mitsuwa Corporation, YNJ, LLC, Daiei Trading Co., Inc. Group, Nagatoshi Produce Co., Ltd., and Santouka Kamei Canada Foods Ltd. With offices in Los Angeles (USA) and Vancouver (Canada), we also export building products, food products, alcoholic beverages and a wide range of other products from North America. The company also acts as a global information provider, supporting Kamei's international strategy.

YNJ, LLC

595 River Rd. Edgewater, NJ, 07020, USA

Daiei Trading Co., Inc.

<https://daiei-trading.com/>

14-50 128th Street, College Point, NY, 11356, USA Tel: 1-718-539-8100 Fax: 1-718-539-4122

Founded in 1970. We import and wholesale Japanese foods and ingredients and sell them to supermarkets and Japanese restaurants in the United States. We have offices in New York, Maryland, Illinois, and Texas.



Daiei Trading-Chicago-Co., Inc.

360 Randy Road, Carol Stream, IL, 60188, USA Tel: 1-630-752-0089 Fax: 1-630-752-0135

Nagatoshi Produce Co., Ltd.

340 North Myers Street, Suite B, Los Angeles, CA, 90033, USA Tel: 1-323-267-8822 Fax: 1-323-267-8833

We are a wholesale distributor of Japanese vegetables and fruits in California, USA. We have a warehouse near the Los Angeles wholesale produce market, and sell fresh vegetables and fruits to supermarkets and restaurants in 30 states across the country.

Mitsuwa Corporation

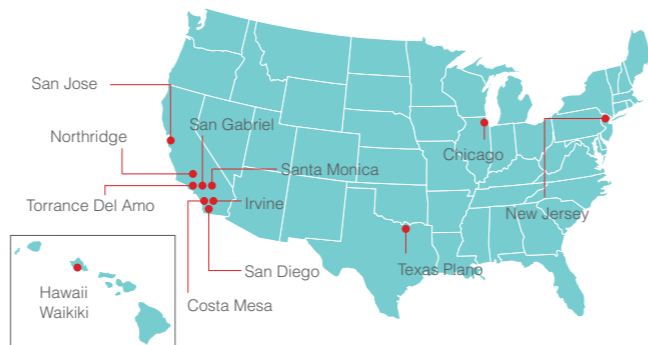
www.mitsuwa.com

1815 W. 213th Street, Suite 235, Torrance, CA, 90501, USA Tel: 1-310-782-6800 Fax: 1-310-782-7100

We operate Mitsuwa Marketplace, the largest Japanese supermarket chain in the United States. We offer a wide selection of products, including Japanese food, sushi, bentos, deli foods, general goods, home appliances, and cosmetics. In addition, the food courts in our supermarkets offer a broad variety of Japanese foods for you to enjoy.



Mitsuwa Marketplace : Store Network



12 stores throughout the US

Central Boeki U.S.A., Ltd.

39-34 43rd Street, Long Island City, NY, 11104, USA Tel: 1-718-729-8966 Fax: 1-718-729-4868

We import and wholesale Japanese foods and ingredients in New York. We have our own freezer and refrigerated warehouses and sell dry and chilled foods imported from Japan, as well as local fruits and vegetables, mainly to supermarkets and Japanese restaurants in the New York area.

Central Boeki Calif., Ltd.

19801 Rancho Way, Suite A, Rancho Dominguez, CA, 90220, USA Tel: 1-310-323-1817 Fax: 1-310-323-1730

We import and wholesale Japanese foods and ingredients in California. With our own freezer and refrigerated warehouses, we sell dry and chilled foods imported from Japan, as well as local fruits and vegetables, mainly to supermarkets.

Overseas Affiliates

Katagiri & Co., Inc.

<https://www.katagiri.com/>

224 E. 59th St., New York, NY, 10022, USA Tel: 1-212-755-3566 Fax: 1-212-752-4197

We operate "Katagiri" brand Japanese supermarkets in Midtown Manhattan, New York. Katagiri has the longest history of any Japanese supermarket in the United States (established in 1907), and it is well known among New Yorkers with a taste for Japanese food.

Santouka Kamei Canada Foods Ltd.

558 West Broadway Street Vancouver, BC V5Z 1E1 Tel: 1-604-565-1770

We established a local subsidiary in Vancouver, Canada, that offers Japanese food culture and services through Ramen Santouka in Vancouver and Toronto.

Kamei Singapore Pte. Ltd.

7 Temasek Boulevard, #04-02B Suntec Tower One, Singapore 038987 Tel: 65-6221-9500 Fax: 65-6225-2930

This local Singapore subsidiary includes Imei (Exim) Pte. Ltd., Lee Huat Yap Kee Pte. Ltd. Group, Eastern Green Marketing Pte. Ltd. Group in Singapore, and the Kamei Vietnam Joint Stock Company Group in Vietnam under its umbrella. As a regional management company in Southeast Asia, it develops new business and collects information on economic and business trends in the countries of the region.

Imei (Exim) Pte. Ltd.

<https://imei-kamei.com/>

No. 3, Kaki Bukit Road 2, #01-04 Eunus Warehouse Complex, Singapore 417837 Tel: 65-6743-0122 Fax: 65-6743-7323

In addition to importing foods from Japan at three different temperature zone (ambient, chilled, frozen) and selling them to supermarkets and restaurants in Singapore, we also export Japanese foods from Singapore to other Southeast Asian countries.



Eastern Green Marketing Pte. Ltd.

1 Buroh Lane, #02M-03, Singapore 618292 Tel: 65-6774-7225 Fax: 65-6774-7610

We import fruits and vegetables from all over the world and distribute mainly to supermarkets in Singapore. Having our own global supply chain ensures that we can purchase fresh, high-quality products throughout the year.

Alamanda Singapore Pte. Ltd.

21 Wholesale Centre, #01-140, Pasir Panjang Wholesale Centre, Singapore 110021 Tel: 65-6774-7225 Fax: 65-6774-7610

Santouka Kamei Singapore Pte. Ltd.

7 Temasek Boulevard, #04-02B Suntec Tower One, Singapore 038987 Tel: 65-6221-9500 Fax: 65-6225-2930

Our Santouka affiliate in Singapore, Santouka Kamei Singapore Pte. Ltd., not only operates directly run Ramen Santouka shops, but also acts as the brand's franchisor in Southeast Asia.



Lee Huat Yap Kee Pte. Ltd.

28 Penjuru Lane, Singapore 609218 Tel: 65-6368-8998

We provide marine lubricant storage, transportation and delivery services in Singapore, one of the world's busiest hub transport ports, with a huge number of vessels calling each year.



LHYK Marine Pte. Ltd.

28 Penjuru Lane, Singapore 609218 Tel: 65-6368-8998

Translub Marine Pte. Ltd.

28 Penjuru Lane, Singapore 609218 Tel: 65-6368-8998

Lee Huat Yap Kee & Co. Pte. Ltd.

28 Penjuru Lane, Singapore 609218 Tel: 65-6368-8998

Kamei Energy Singapore Pte. Ltd.

28 Penjuru Lane, Singapore 609218 Tel: 65-6368-8998

We sell petroleum products and chemical products around the world, mainly in Asia-Oceania region.



Kamei Vietnam Joint Stock Company

384/8 Huynh Van Banh, Ward 14, Phu Nhuan District, Ho Chi Minh City, Vietnam

Based in Ho Chi Minh City, Hanoi City, and Da Nang City in Vietnam, we import and sell specially selected wines from all over the world. As a pioneer in the sale of imported wines in Vietnam we have built a solid foundation for this business with close connections to the regions and customers.



Phu & Em Trading Service Co., Ltd.

489 Xo Viet Nghe Tinh, Ward 26, Binh Thanh District, Ho Chi Minh City, Vietnam
Tel: 84-28-3898-4890 Fax: 84-28-3899-2962

Dai Minh Service And Trading Co., Ltd.

305 Vinh Hung quarter, Vinh Hung Ward, Hoang Mai District, Hanoi City, Vietnam
Tel: 84-24-3665-8828 Fax: 84-24-3665-8828

Trade

Sanko Progress Mabis Corporation

www.sanko-mabis.com

20-7 Samoncho, Shinjuku-ku, Tokyo 160-0017 Tel:81-3-6386-3501 Fax:81-3-6386-3521

Sanko Progress Mabis Corporation imports and exports marine products, machinery and other products. It has ten offices in six countries: Russia (Moscow, Vladivostok and Kamchatka), China (Beijing, Shanghai and Hong Kong), Singapore, Thailand (Bangkok), Philippines (Manila) and Vietnam (Hanoi). Utilizing our global network built over the years, and our know-how as a professional group mainly operating in East Eurasia, we are committed to the international development, import and export of a wide variety of products as a core business of the Kamei Group as it expands outside Japan.

KC Central Trading Co., Ltd.

https://boeki.co.jp/

3-7-2, Irifune, Chuo-ku, Tokyo, 104-0042 Tel: 81-3-5244-9778 Fax: 81-3-3555-1058

We export Japanese foods and ingredients to many countries and regions including Australia, Europe, Southeast Asia and the United States under our motto: "Delivering high-quality Japanese foods all around the world." We have import wholesale subsidiaries in New York and Los Angeles, and a subsidiary in Manhattan that operates the oldest Japanese grocery store in the United States (founded in 1907), all of which cater to the needs of those local communities.

Saint Plaza Co., Ltd.

3-18-19 Toranomon, Minato-ku, Tokyo 105-0001 Tel: 81-3-6809-2660 Fax: 81-3-3459-1511

Bao Chau International Distribution Co., Ltd.

256, Street 2 Thang 9, Hoa Cuong Bac Ward, Hai Chau District, Da Nang City, Vietnam
Tel: 84-236-378-9459 Fax: 84-236-378-9458

Qingdao Saint Sports Co., Ltd.

YuHuangLing Industrial Zone, Xizhaizitoucun, Xiaozhuang St., Chengyang District, Qingdao, Shandong Province, China Tel: 86-532-8775-4015 Fax: 86-532-8775-4017

Qingdao Saint Sports is a factory that mainly manufactures golf bags in Qingdao, Shandong Province, China. We manufacture OEM products as commissioned by major manufacturers and large-scale mass retailers.

Sanko Mabis (Beijing) Corporation

Room 19-02, Citic Building, Jian-Guo-Men-Wai Avenue #19, Beijing, China Tel: 86-10-6501-8557 Fax: 86-10-6501-6870

We offer advice and assistance on the import of machinery and other materials from Japan, the import and export of products mainly related to local sales of bearings, and other sales business in China.

Tachibana Material Taiwan Co., Ltd.

14 F., No. 51, Sec. 2, Keelung Rd., Xinyi Dist., Taipei City 110502, Taiwan

A wholesale distributor in Taiwan of chemicals for soil improvement work.

Kamei Proact Corporation

www.kamei-pro.co.jp

3-18-19 Toranomon, Minato-ku, Tokyo 105-0001 Tel: 81-3-6450-1234 Fax: 81-3-5776-5937

Unique brands deliver suggestions for luxurious, comfortable lifestyles. The brands include: Patrick, casual shoes born in France; Superga, Italian canvas shoes popular nationwide; Butterfly Twists, foldable ballet shoes from the UK; and thermo mug, mugs and tumblers featuring stylish designs and excellent thermal insulating properties from Japan. The Golf Division trades its core Patrick golf products, and produces high-quality golf gear, including golf club bags, through OEM at the company's factory in China.



thermo mug Pantofola d'Oro SUPERGA BUTTERFLY TWISTS cool gear

Kamei Physical Distribution Services Co., Ltd.

2-7-36 Sakae, Tagajo, Miyagi 985-0833 Tel: 81-22-365-3411 Fax: 81-22-367-1291

As a comprehensive distribution company engaged in the transport, storage and loading/unloading of oil products, beverage products and general freight, we operate a distribution network throughout the Tohoku and Kanto regions to provide high-quality services while placing top priority on safety. Our Smile Butsuryu Department contributes to society through the delivery and stable supply of commodities; mainly kerosene and LPG for general households and businesses.



Pacific Co., Ltd.

www.k-pac.co.jp

4 Kitanaganuma, Shimonocho, Iwanuma, Miyagi 989-2421 Tel: 81-223-22-4424 Fax: 81-223-22-4701

We operate facilities for the storage of jet fuel, which is essential to international and domestic plane arrivals and departures, and supply fuel to departing planes at Sendai and Fukushima Airports. We also provide fuel to small aircrafts and helicopters engaged in journalism, land surveys, tourism, law enforcement, fire fighting, healthcare and pesticide applications throughout the entire Hokkaido and Tohoku regions. In addition, we sell industrial lubricants used in various factories.



Fuji Oil Service Co., Ltd.

1-1 Kaminonagare, Minatohama-aza, Shichigahama-machi, Miyagi-gun, Miyagi 985-0813 Tel: 81-22-362-8965 Fax: 81-22-367-8430

We are involved in tank truck shipments, marine shipments, and the operation of effluent-treatment facilities in the Sendai Refinery of ENEOS Corporation, playing a role in the stable supply of energy, mainly in the Tohoku region.



Tohoku Gas Corporation

www.tohoku-gas.co.jp



50 Mukaibara, Odakura, Nishigo-mura, Nishishirakawa-gun, Fukushima 961-8061 Tel: 81-248-27-1188 Fax: 81-248-22-1138

We are the first town gas provider in the Kamei Group, and deliver town gas to about 4,500 households, mainly in Shirakawa City in the south of Fukushima Prefecture, and LPG to about 3,900 households around the same city. We will continue to contribute to the development of local society by placing a priority on offering locally-based reliable services, securing an environment in which customers can use gas with peace of mind, and offering a stable supply of gas.



Shiogama Petroleum Disaster Prevention Co., Ltd.

3-13-5 Teizandori, Shiogama, Miyagi 985-0011 Tel: 81-22-367-4181 Fax: 81-22-367-8611

Tochigi LPG Co., Ltd.

1-14-13 Murasakizuka, Otawara, Tochigi 324-0058 Tel: 81-287-22-2853 Fax: 81-287-22-2550

Shinshirakawa LPG Supply Center Co., Ltd.

2-63 Nakanoyama, Shirakawa, Fukushima 961-0844 Tel: 81-248-31-0465

Saito Gas Co., Ltd.

3-16-17 Kusushi, Aomori, Aomori 038-0013 Tel: 81-17-781-8266

Kamei Engineering Co., Ltd.

<https://www.kamei.co.jp/eng/>

12-14 Futsukamachi, Aoba-ku, Sendai, Miyagi 980-0802 Tel: 81-22-264-9559 Fax: 81-22-281-8758

Our company is a "group of architectural production engineers," working in architectural planning and refurbishing construction. Design plans, construction plans, steel frame assembly diagrams, and every kind of refurbishing construction, all handled according to your requests by the group work of skilled experts. As professionals with knowledge, experience and skill, we can provide speedy, safe and secure, and high-quality architectural services.



Tachibana Material Co., Ltd.

<https://www.tachibana-m.co.jp/>

5-157-1 Hattori-Kotobukicho, Toyonaka, Osaka 561-0857 Tel: 81-6-6865-1610 Fax: 81-6-6865-1612

A specializing trading company in civil engineering materials that wholesales civil engineering materials (bentonite, cement, chemicals, etc.) used in pile foundation work of large-scale buildings, ground improvement work, tunnel excavation work, etc. We have earned the trust of our customers, including major general contractors, for our on-site response capabilities that utilize our many years of experience and our product development capabilities that utilize our in-house developed functions. In the field of civil engineering materials, we will meet a wide range of needs from private works to public works.



Oumi Kikou Co., Ltd.

<http://oumi-kikou.co.jp/>

5-157-1 Hattori-Kotobukicho, Toyonaka, Osaka 561-0857 Tel: 81-6-6865-1615 Fax: 81-6-6865-1612

We manufacture and sell construction machinery, including mixing plants and cement silos.

Higuchi Beikoku Co., Ltd.

www.higuchi-b.co.jp

167 Joko, Konosu, Saitama 365-0024 Tel: 81-48-542-1706 Fax: 81-48-542-1917

Since its foundation in 1955, Higuchi Beikoku has developed a stable supply system for high-quality rice, meeting the needs of the times. Based in Konosu, Saitama, we have the latest rice-milling equipment (fitted with a device that automatically discharges left over rice grains) which is capable of processing up to 60 tons of brown rice per day, and is fully compatible with small-lot production and traceability systems.



Wing Ace Corporation

<https://www.wingace.jp/>

3-18-19 Toranomon, Minato-ku, Tokyo 105-0001 Tel: 81-3-5404-7533 Fax: 81-3-5404-3340

Under the slogan "Interaction with the world through food culture," we introduce authentic tastes that are appreciated by people of all ages. We import processed foods (pickles, dressings, seasonings, bottled and canned foods), snacks (chocolates, candies, cookies) and other selected foods such as pasta and olive oil from manufacturers all over the world, and provide them to customers throughout Japan. In addition, we are the exclusive distributor in Japan of Kuhne—a German food manufacturer that boasts the top market share in Germany and is loved by gourmets worldwide.



Ikemitsu Enterprises Co., Ltd. I M E C

www.ikemitsu.co.jp

3-18-19 Toranomon, Minato-ku, Tokyo 105-0001 Tel: 81-3-6459-0480 Fax: 81-3-5776-4843

Taking full advantage of our international networks, we import a wide range of beer and wine brands from around the globe. We offer alcoholic beverages from 14 different countries in Southeast Asia (some of the world's best-loved brands including Tsingtao from China, Chang from Thailand, 333 from Vietnam, Bintang from Indonesia, and Lion from Sri Lanka), Europe and Latin America. We will continue our quest to discover and import new products from around the world.



Vintners Inc.

<https://www.vintners.co.jp/>

3-18-19 Toranomon, Minato-ku, Tokyo 105-0001 Tel: 81-3-5405-8368 Fax: 81-3-5405-8369

We are an importer of carefully-selected, high-quality wines from over 100 wineries mostly in the US as well as European countries including France, Italy, and Spain. We are an authorized distributor of wines with outstanding reputation and excellence recognized by many sommeliers and buyers.



Agri Corporation

www.ywc.co.jp

6-86-1 Onocho, Naka-ku, Yokohama 231-0015 Tel: 81-45-212-5588 Fax: 81-45-212-5568

While many wines are imported to Japan from around the world, we visit local wine producers and seek out wines that are loved by the local people, and discover wines which have yet to be introduced to Japan actively, rather than well-known brand. We visit the vineyards and wineries, meet the wine producers and understand their commitment about winemaking. We deliver the selected wines with their passion to our customers.



Sun-Eight Trading Co., Ltd.

www.sun-eight.com

1-1-1 Minamiaoyama, Minato-ku, Tokyo 107-0062 Tel: 81-3-5414-1570 Fax: 81-3-5414-1580

We are a specialty trading company that offers high-grade confectionery ingredients under the slogan: "Delivering pleasure and happiness to our customers through genuine products of real value." We provide our customers with the finest products from Europe and the rest of the world, including KAOKA, a French organic chocolate maker.



Kodama Co., Ltd.

<https://kodama-ltd.co.jp/>

1-3-9, Keihinjima, Ota-ku, Tokyo 143-0003 Tel: 81-3-5755-2311 Fax: 81-3-5755-2912

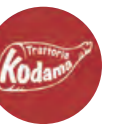
With three manufacturing plants in Keihinjima, Ota-ku, Tokyo, we are a food manufacturer that preserves the handmade taste of craftsmen who emphasize traditional European methods and safety. We operate a food manufacturing business that produces ham, delicatessen, bakery, and other products, an import trade business that specializes in hard to get dry-cured ham, wine, organic foods, etc., and a retail and restaurant business.



Network of directly-managed Kodama restaurants and stores

Ginza, **3** stores

Shinagawa, Meguro, Ebisu, Ikebukuro, Kichijoji, **1** store



Angelina Co., Ltd.

1-3-9, Keihinjima, Ota-ku, Tokyo 143-0003

Sendai Toyopet Co., Ltd.



www.p-sendai.co.jp

2-8-1 Nigatake, Miyagino-ku, Sendai, Miyagi 983-0036 Tel: 81-22-232-1111 Fax: 81-22-236-2677

We operate a Toyota dealership with 22 locations in Miyagi Prefecture, as well as Lexus Miyagino, Lexus CPO Ishinomaki, and Daihatsu Kurihara Tsukidate. All of them have acquired the ISO14001 Environmental Management System Certification. Our sales activities are deeply rooted in the local community, offering a wide range of car models including electric cars, hybrid cars, compact cars, sedans, minivans, commercial cars, vehicles for the disabled, and used cars. Our technicians, who boast a high level of technical expertise and have consistently achieved excellent results in Toyopet's servicing competitions, provide comprehensive follow-up and maintenance services.



Yamagata Toyopet Co., Ltd.



https://yamagata-toyopet.jp

5-5-2 Iidanishi, Yamagata, Yamagata 990-9588 Tel: 81-23-641-1441 Fax: 81-23-641-8694

We are a Toyota-affiliated car dealership in Yamagata Prefecture, selling the complete range of Toyota and Lexus cars. To win the loyalty of our local customers, we offer all kinds of information about car care, lifestyle, and events via our social media platforms and websites. As the No.1 dealer of Prius hybrid cars in the prefecture for 15 straight years, we have set up a foundation to help protect Yamagata's natural environment and contribute to the welfare of local residents. In this and other ways, we are strongly committed to performing our own CSR and SDG initiatives.



Kamei Auto Corporation

https://www.kameiauto.co.jp/

8-65 Nishimachi, Rokuchonome, Wakabayashi-ku, Sendai, Miyagi 984-0011 Tel: 81-22-288-6751 Fax: 81-22-288-6772

As an authorized dealer of Volvo, Jaguar, and Land Rover brands, we have established five major dealership locations in Sendai, Koriyama, Iwaki, Morioka, and Yamagata, thereby covering the whole of the Tohoku region. On top of sales of new and used vehicles, we offer trusted maintenance services utilizing advanced technology.



Kamei Auto : Store Network



Sendai, Koriyama, Iwaki, Morioka, Yamagata,
1 Store

Kamei Auto Hokkaido Corporation

https://sapporo.vc-dealer.jp

18-1-36 Higashi Ichijo, Tsukisamu, Toyohira-ku, Sapporo, Hokkaido 062-0051 Tel: 81-11-855-7400 Fax: 81-11-855-8433

As an official dealer in Hokkaido for the popular Northern European car brand Volvo, we have showrooms in Sapporo, Sapporo Nishi and Asahikawa that sell new and second-hand cars and provide maintenance services. As a company based in Hokkaido, we have built a strong relationship of trust with our customers and aim to respond to local needs.

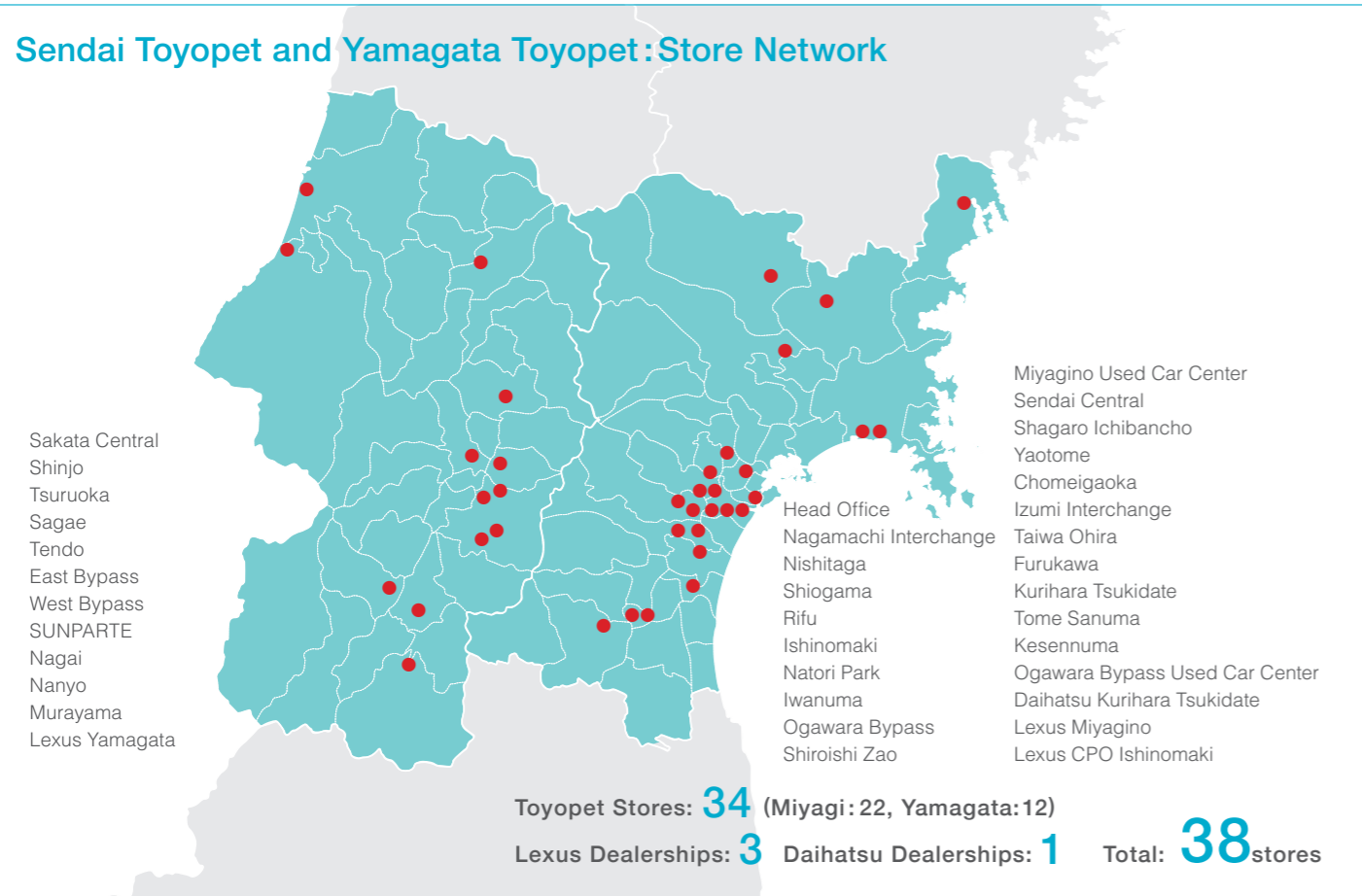


Kamei Auto Hokkaido : Store Network



Sapporo, Sapporo Nishi, Asahikawa,
1 Store

Sendai Toyopet and Yamagata Toyopet : Store Network



Toyota Sendai Rental & Leasing Co., Ltd.



www.r-sendai.co.jp

2-8-1 Nigatake, Miyagino-ku, Sendai, Miyagi 983-0036 Tel: 81-22-232-0100 Fax: 81-22-232-0188

We operate 13 outlets in Miyagi Prefecture to provide Toyota car rental and leasing services for both individual and corporate customers. We also offer 24/7 car sharing services. Feel free to contact us with your rental and leasing needs for business and leisure purposes.

James Sendai Co., Ltd.



3-5 Minamimachi, Rokuchonome, Wakabayashi-ku Sendai, Miyagi 984-0013 Tel: 81-22-390-7311 Fax: 81-22-390-7312

As a new style of car maintenance store with the new concept of "A Garage for Everyone," we opened two stores in Sendai: James Izumi Intercity and James Rokuchonome. The stores stock the latest products at reasonable prices, including tires, wheels, and satellite navigation systems. Moreover, as authorized KeePer PROSHOPS for car wash and coating as well as qualified garages designated by the Transport Bureau, both stores have certified professionals holding 1st Grade KeePer Technical Laboratory's Technical Authorization on hand to provide excellent services, including the highest grade of EX KeePer Coating, giving you a comfortable car experience.

Orix Rent-A-Car Kamei Co., Ltd.



www.kamei.co.jp/orix_kamei

2-10-28 Honcho, Aoba-ku, Sendai, Miyagi 980-0014 Tel: 81-22-227-0543 Fax: 81-22-227-0814

We provide Orix brand car rental services to corporate and individual customers. A wide range of vehicles from various manufacturers is available, including kei cars, commercial cars, and minibuses. We operate 34 outlets in Aomori, Iwate, Miyagi, Yamagata, and Fukushima Prefectures to provide locally-based services.

Senzan Technocraft Co., Ltd.

60 Sawame, Tako-aza, Natori, Miyagi 981-1221 Tel: 81-22-384-3145 Fax: 81-22-382-1392

We have two workshops each in Miyagi and Yamagata Prefectures that provide a wide range of services including bodywork, painting, repairs, the commoditization of trade-in cars, and the inspection, customization, and transport of new cars, mainly to the customers of Sendai Toyopet and Yamagata Toyopet. By establishing a logistics system and introducing the latest equipment, our bodywork and painting workshops—which are one of the biggest in the Tohoku region—are capable of servicing more than 10,000 vehicles per year.

Endo Pharmacy Co., Ltd.

www.enndo.co.jp

3-1-9 Sakurada,Kuki,Saitama 340-0203 Tel: 81-480-53-3901 Fax: 81-480-53-3902

We operate pharmacies and drugstores in Saitama Prefecture and Ibaraki Prefecture. As the company's foundation dates back to 1869, more than 150 years have passed since we started to support the health of local citizens. During this period, we have won the trust of local communities. On the basis of trust and sincerity, we will continue our efforts to contribute to community healthcare and the health management of local people.



Marron Co., Ltd.

www.marron-g.co.jp

3-1-3 Nishikatakura, Hachioji, Tokyo 192-0917 Tel: 81-42-632-0225 Fax: 81-42-632-0226

We operate multiple medical centers, located mainly in the Tama area of Tokyo. With "constant improvement, constant kindness" as a motto, we strive to become an even higher quality pharmacy to help maintain the health of the community residents.



Mito Pharmacy Co., Ltd.

<https://www.mito-ph.com/>

5-36-7 Takasago, Katsushika-ku, Tokyo 125-0054 Tel: 81-3-3607-2563 Fax: 81-3-3607-2579

We operate pharmacies in the Katsushika and Edogawa wards of Tokyo, as well as in Chiba Prefecture. Our mission as a provider of community healthcare is to gain empathy and trust from customers, healthcare practitioners and local residents, and to contribute to the improvement of the local medical culture by providing safe, reassuring and appropriate medication as well as better information and meticulous service.



Aim Co., Ltd.

<https://aim-ph.com/>

6-1-1 Nishinakajima, Yodogawa-ku, Osaka 532-0011 Tel: 81-6-6885-5180 Fax: 81-6-6885-5181

We operate pharmacies in Osaka Prefecture and Hyogo Prefecture. Our aim is to help local citizens live healthier and more comfortable lives by continuing to improve ourselves every day and never forgetting our mission as a member of the general healthcare network in the community.

Oasih's Co., Ltd.

www.waseda-elif-sendai.com

3-1-18 Kokubuncho, Aoba-ku, Sendai, Miyagi 980-0803 Tel: 81-22-264-6235 Fax: 81-22-264-6082

At Sendai in Miyagi Prefecture we operate three facilities offering day-care services, specializing in preventive nursing care aimed at learning exercise habits.

Kamei Pharmacy Tohoku Co., Ltd.

3-1-18 Kokubuncho, Aoba-ku, Sendai, Miyagi 980-0803 Tel: 81-22-264-6164 Fax: 81-22-264-6082

We operate four pharmacies in Miyagi prefecture—in Izumi-ku, Sendai City, in Osaki City, and in Tome City. In addition to filling prescriptions, we aim to serve as a "community health station," by offering health consultations and supplying medical and pharmaceutical products.



MCS Co., Ltd.

www.mcs-g.co.jp

102-3 Jinmucho, Yao, Osaka 581-0067 Tel: 81-72-925-7728 Fax: 81-72-925-7712

We operate seven pharmacies in Osaka and Nara Prefectures. The services we provide include assisted living with nursing care, home-visit nursing care, elderly daycare, and the sale of medical equipment. Not only do we fill prescriptions, but we also provide a range of medical and caregiving related equipment and services so as to strive to maintain customer's health and create fulfillment at the various stages of their lives.



Oshimaono Shoji Co., Ltd.

<https://onoshoji.co.jp/>

215 Doyo, Ohiramachi, Tochigi, Tochigi 329-4402 Tel: 81-282-22-4188 Fax: 81-282-23-8576

We operate an extensive business as a general trading company offering pet foods, pet accessories, and gardening and farming materials. We regularly stock a diverse range of around 12,000 products at our distribution center, and they are delivered nationwide through an expansive network connecting all our locations. We not only offer Japanese brands, but also develop and import all kinds of private brand products. In addition, we meet various customer needs by offering support and consultation services in areas ranging from store brand development to sales promotion.



Pet&i Co., Ltd.

<https://www.pet-i.co.jp/>

215 Doyo, Ohiramachi, Tochigi, Tochigi 329-4402 Tel: 81-282-22-2355

To help people to build better relationships with their pets, we design and develop products that meet customers' needs, from basic items to original value-added products.



Tomson Corporation

<https://www.tomson.co.jp/>

215 Doyo, Ohiramachi, Tochigi, Tochigi 329-4402 Tel: 81-282-25-3211

Since the company was established in 1983, we have manufactured horticultural fertilizers and imported herbicides. We are one of the largest sellers of amino acid herbicides in Japan.



Kamei Shoji Corporation

www.kamei-shoji.jp

3-1-18 Kokubuncho, Aoba-ku, Sendai, Miyagi 980-0803 Tel: 81-22-268-7311 Fax: 81-22-268-7318

●By offering leasing arrangements (general and automotive), installment sales, rentals, second-hand sales, etc., we allow our customers to lower costs and streamline operations, further increasing their corporate capabilities.
 ●We help our customers with Japan Rail reservations, airline tickets, hotel reservations, and domestic and international travel plans, as well as providing a range of services, from planning to administering all kinds of events such as company functions, dealer meetings, research tours, etc.



Persol Tempstaff Kamei Corporation

<https://www.persol-tempstaffkamei.co.jp/>

1-20 Kakyoin, Aoba-ku, Sendai, Miyagi 980-0013 Tel: 81-22-266-3171 Fax: 81-22-266-3060

We are a general staffing service company with offices in all prefectures in the Tohoku region. Backed by the Persol group network and the collective strength of the Tohoku-based Kamei Group, our highly reliable human resource management system enables us to place staff registered with us in a wide range of companies. We respond to the diverse needs of our customers by fusing our ability to capture detailed information as a community-based business with our general knowledge of staffing services.



Mitsumoto Shoji Co., Ltd.

<https://www.mitumoto.co.jp>

4-37-18 Fujimidai, Kunitachi, Tokyo 186-0003 Tel: 81-42-571-5111 Fax: 81-42-571-5454

We offer three kinds of solutions to meet any office-related needs or desires.
 [Facilities] We support work style transformation by producing optimal office space layouts to suit today's increasingly diverse work processes.
 [IT and communications] We offer optimal IT and communications solutions for offices, including system development, software installation, and data security enhancement.
 [Supplies] In addition to necessary office consumables, we offer disaster prevention supplies, novelty items with company logos, and many other essential products and services for offices.



Chronos Medical Devices, Inc.

<https://www.chronos-med.com/>

2-22-17 Kameido, Koto-ku, Tokyo 136-0071 Tel: 81-3-6807-0811 Fax: 81-3-6807-0821

Under our licenses to sell specially controlled medical devices and to repair medical devices, we provide imported high-quality medical equipment to major medical institutions in Japan, along with repair and maintenance services. Our flagship product is the Cardiac Trigger Monitor made in the United States, which boasts a large market share in Japan.



141 Co., Ltd.

2-15-1 Honcho, Aoba-ku, Sendai, Miyagi 980-0014 Tel: 81-22-268-0141

Ishinomaki Port Petroleum Distribution Assoc.

3-11-7 Sakanamachi, Ishinomaki, Miyagi 986-0022 Tel: 81-225-96-8741

Fitness Promotion Co., Ltd.

www.xystus.co.jp

2-5-5 Nishi, Naha, Okinawa 900-0036 Tel: 81-98-868-0758 Fax: 81-98-861-3168

Throughout Okinawa, we operate four large-scale fitness clubs "Sports Palace Xystus". With more than 12,500 members, we are helping to support the healthy lives of local people of all ages.



Miyagi Television Broadcasting Co., Ltd.

<https://www.mmt-tv.co.jp>

1-5-33 Hinodemachi, Miyagino-ku, Sendai, Miyagi 983-8611 Tel: 81-22-236-3411 Fax: 81-22-236-3406

Since opening in 1970 as Miyagi Prefecture's third private broadcaster, we have accumulated a proven track record as flagship station of the Nippon TV network in the Tohoku region. We also focus on producing in-house programs, and with our evening shows -- such as the long-running "OH! Bandedu," which is beginning its 30th year of broadcasting in April 2024 -- we have established ourselves as a television station that is closely tied to the community. In addition to programming, we also hold many events. The Miyagi TV Cup Dunlop Ladies Open Golf Tournament will be held for the 51st time this year, having run for more than half a century. Also, through this tournament, we are continuing our support of Miyagi Children's Hospital.



Oh! Bandedu



Miyagi TV Cup Dunlop Ladies Open Golf Tournament



Miyagi Television Service Co., Ltd.

1-5-33 Hinodemachi, Miyagino-ku, Sendai, Miyagi 983-8611 Tel: 81-22-284-8057



CSR *Corporate Social Responsibility*

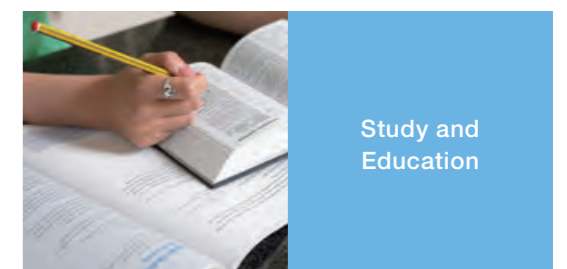
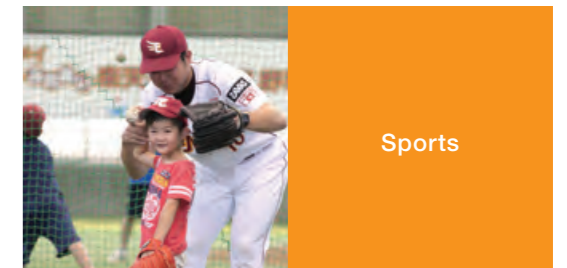
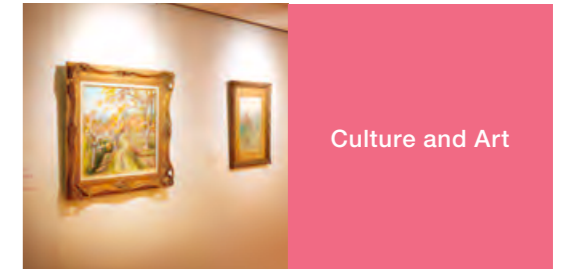
As a member of the local community, we aim to create values that can be shared with society.

As an official sponsor of the Tohoku Rakuten Golden Eagles, Vegalta Sendai, Mynavi Sendai Ladies, Kamei contributes to the promotion of local sports culture. We are also working to support local cultural activities by sponsoring and participating in cultural events such as local festivals and music festivals.

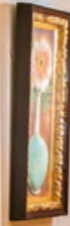
The Kamei Memorial Foundation provides support in the form of scholarships to both Japanese and international students. In addition, The Kamei Foundation for the Promotion of Social Education works toward the advancement of the regional culture by introducing great works of art and culture through the operation of the Kamei Museum, and also provides assistance and other support to the social education activities of assistant curators and young people.

Our CSR activities have been carried out in accordance with our corporate philosophy since our inception. Our philosophy states that “As a general trading company with strong local community ties, we constantly strive to support people in their daily lives as we ourselves develop and grow.” This concept that corporations should be societal institutions is also reflected in our corporate ethics charter which states that “As a good corporate citizen, we will contribute to society as a whole by strengthening our ties to local communities and participating in regional social activities.”

We will continue to place coexistence with society and the world at the foundation of our business, as we use our strengths and abilities as a general trading company to resolve social issues through our business operations. In this context, we would like to create new value for society and assume public responsibility for the development of a sustainable society.



Culture and Art



By operating a museum, we introduce fine works of art and culture to promote local culture.

Official Sponsorships



©Rakuten Eagles



©1998 VEGALTA



Kamei Rakuten Eagles family baseball clinic



From beginners playing catch for the first time to children dreaming of becoming pros, everyone can enjoy this fun parent and child baseball clinic, which is held every summer vacation and taught by professional baseball players.

Kamei Cup Tohoku youth soccer tournament



This under-15 tournament began in 1978 out of our desire to promote soccer in the Tohoku region. As many participants have gone on to become professional players, taking part in this tournament has become an aspiration for youth soccer players in the Tohoku region.

Kamei Hidemasa Hoshino junior golf clinic



This golf clinic is held with the goal of fostering junior golfers in Miyagi Prefecture. By inviting Hidemasa Hoshino, a professional golfer from Miyagi, and other guest professionals, we teach participants - from elementary school students in the lower grades to high school students - how to enjoy golf.

Kamei Foundation for the Promotion of Social Education

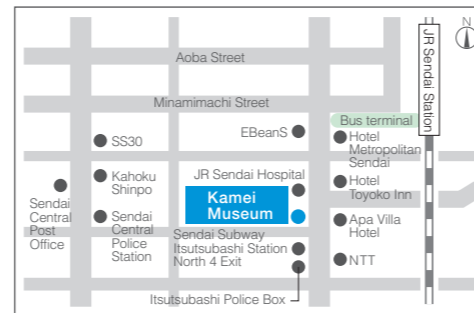
This foundation was established in 1995 with the aim of contributing to social education. We operate the Kamei Museum which houses valuable collections, subsidize the training of assistant curators for museums, and subsidize social education activities for young people.

Kamei Museum

Our museum exhibits around 14,000 butterflies of approximately 4,000 species from the collection that Bunzo Kamei, the third president of Kamei Corporation, collected from around the world over a period of 60 years. Traditional Tohoku region Kokeshi dolls, including valuable pre-WWII Kokeshi, collected by Shogo Kamei, senior advisor to Kamei Corporation, are also displayed. The museum includes representative paintings by modern and current era Japanese artists as well.

Major artists in our collection

| | | |
|-------------------|-------------------|---------------------|
| Chu Asai | Kazumasa Nakagawa | Setsuko Migishi |
| Saburotsuke Okada | Sadao Tsubaki | Matazo Kayama |
| Hanjiro Sakamoto | Keizo Koyama | Yuki Ogura |
| Tsuguharu Fujita | Yuzo Saeki | Georges Rouault |
| Ryuzaburo Umehara | Takanori Ogisu | Maurice de Vlaminck |
| Sotaro Yasui | Seiji Chokai | Raoul Dufy |
| Jun Sugimura | Ryohei Koiso | Marie Laurencin |



- Hours: 11 am to 4 pm (entrance open until 3:30 pm)
- Closed: Mondays (except holidays), New Year holidays (December 28 to January 4)
- Admission: General: 300 yen (20% discount for groups of 20 or more) Seniors (65+) and students (high school and younger) free

Kamei Itsutsubashi Bldg. 7F, 1-1-23 Itsutsubashi, Aoba-ku, Sendai
Tel: 81-22-264-6543 Fax: 81-22-264-6544
www.kameimuseum.or.jp



Display of butterflies



Display of kokeshi dolls

We promote sporting activities by organizing clinics and tournaments that foster the dreams of children.

Sports

Study and Education



We support young people's desire to learn by providing scholarships and educational loans to Japanese and international students.

Kamei Memorial Foundation

This foundation was established in 1981 to provide scholarships and educational loans to Japanese and international students of graduate schools, universities, high schools, technical institutes and nursing schools. To date, we have supported a total of 3,482 students (as of August 2023).



Kamei Kids Dream Foundation (Shiogama City)

Kamei Corporation donated 100 million yen to Shiogama City to help nurture young people for the next generation, and the city used these funds to establish the Kamei Kids Dream Foundation. This foundation started its first overseas training project, targeting junior high students, to foster young people with increased international awareness.



Social welfare corporation Yasuragi-kai



In 1976, third president Bunzo Kamei, together with volunteers, established a social welfare corporation called "Yasuragi-kai." The organization is dedicated to providing local welfare services for the elderly, including operation of a special care home for the elderly "Furoen," a group home "Yasuragi," and "Naruse Helper Station."

Sendai Umino-mori Aquarium



The Sendai Umino-mori Aquarium opened in July 2015 in Sendai's Miyagino District and boasts the largest number of exhibits in Tohoku. It was established by our company, together with Mitsui & Co., Ltd., Yokohama Hakkeijima Co., Ltd., three other local companies, and the Sendai Aquarium Development Co., Ltd. which is funded by the Private Urban Development Promotion Organization (Foundation). By participating in this aquarium project and providing a place of healing and education, our company is proactively working to revitalize the local community.

The Organization for Industrial, Spiritual and Cultural Advancement (OISCA)



OISCA is an NGO that promotes the recruitment of technical trainees, the dispatch of technicians, and the development of communities and young people in developing countries, as well as international exchange and development education activities with the aim of advancing industrial and personnel development in developing countries. Fumiyuki Kamei, our company's Chairman and CEO, serves as chairman of the OISCA Miyagi branch, and many of our executives, employees and retirees are cooperating with the organization.

Forest Planting - Kamei Forest Miyagi



In 2013, as part of our activities to commemorate the 110th anniversary of our establishment, we began activities to maintain local forests. With the signing of a Forestry Maintenance Agreement and a Naming Rights Agreement with Miyagi Prefecture, we began our activities in the prefectural forest near Taiwa-cho, Miyagi Prefecture. Through tree-planting, path building and generally maintaining the forest, we have been able to contribute to the promotion of global environmental conservation while at the same time providing a familiar place of refreshment and relaxation for the people of this region.

We are committed to social welfare and environmental issues to realize a society in which the next generation can live with peace of mind.



Social Welfare and the Environment

History

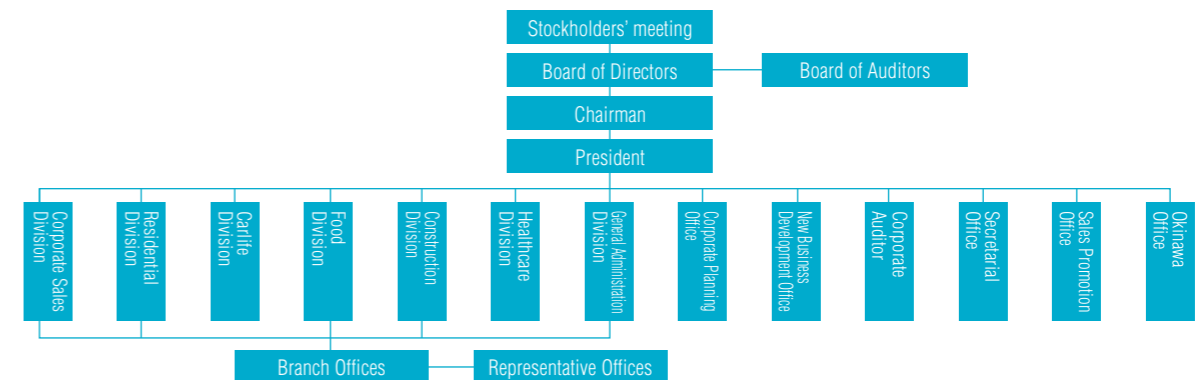
- 1903** The first president, Bunpei Kamei, started selling oil, general merchandise, sugar, flour, etc. at Shiogama, Miyagi Prefecture.
- 1908** Started a dealership of Nippon Oil Corp.(presently ENEOS Corp.) and began selling petroleum products.
- 1919** Started selling liquor.
- 1925** Established the Miyako Semi-branch Office. Later, more branches were opened on the Sanriku Coast and served as bases for selling our products to ships.
- 1932** Reorganized as Kamei Shoten Company. Began selling automobiles and parts.
- 1933** Started a Kirin Brewery Co., Ltd. dealership, which later became a mainstay for liquor sales.
- 1936** Started a U.S. Standard Vacuum Oil Co. (presently ENEOS Corp.) dealership.
- 1937** Unzo Kamei was inaugurated as the second president. Started a Tohoku Cement Corp. (presently Taiheiyō Cement Corp.) dealership, and began selling cement, etc.
- 1949** Started to operate gas stations.
- 1953** Established Fuji Transport and Warehouse Corp. (presently Kamei Physical Distribution Services Co., Ltd.) and started land transportation services.
- 1954** Completed the Ofunato Import Base. Directly imported heavy oil with a foreign exchange allocation for oil imports.
- 1955** Started a Nippon Petroleum Gas Co., Ltd. (presently Eneos Glove Corp.) dealership, and began selling propane gas. Started a Dunlop Rubber Company (Japan) Ltd. (presently Sumitomo Rubber Industries, Ltd.) dealership, and began selling tires.
- 1956** Established Kamei Shoji Corp. Established Sendai Toyopet Sales Corp. (presently Sendai Toyopet Co., Ltd.).
- 1965** Moved the head office to Sendai.
- 1973** Entered the trading business. Established Kamei Shoten of America in response to globalization.
- 1974** Completed new head office building.
- 1977** Established Insurance Department, and started non-life insurance services.
- 1978** Bunzo Kamei was inaugurated as the third president.
- 1979** Established Communication Equipment Sales Section, and began selling information equipment.
- 1982** Established Kamei Sports Corp. (presently Kamei Proact Corp.).
- 1985** Introduced corporate identity (CI). Changed the name from Kamei Shoten Co. to Kamei Corp. Introduced K-NET, a new company-wide computer system.
- 1986** Listed stocks on the second section of the Tokyo Stock Exchange.
- 1988** Listed stocks on the first section of the Tokyo Stock Exchange.
- 1989** Established Kamei Auto Corp. and Kamei Auto Hokkaido Corp.
- 1993** Celebrated the 90th anniversary of its foundation. Shogo Kamei was inaugurated as the fourth president.
- 1994** Established Tour Operation Division (Kamei Travel) in Kamei Shoji Corp.
- 1999** Established National Kamei Exclusive Distributor Network. Acquired shares of Yamagata Toyopet Co., Ltd.
- 2000** Established Pharmacy Section, and started pharmacy services.
- 2003** Celebrated the 100th anniversary of its foundation. Fumi-yuki Kamei was inaugurated as the fifth president.
- 2005** Acquired shares of Tohoku Gas Corp. and began city gas services.
- 2007** Acquired shares of Saint Plaza Co., Ltd. Established Santouka Kamei Singapore Pte. Ltd.
- 2008** Acquired shares of Oshima Co., Ltd. (presently Oshimaono Shoji Co., Ltd.), Ikemitsu Enterprises Co., Ltd., Tochigi LPG Co., Ltd., Onoshoji Co., Ltd. (presently Oshimaono Shoji Co., Ltd.), Mitsumoto Shoji Co., Ltd. and Endo Pharmacy Co., Ltd.
- 2009** Acquired shares of Wing Ace Corp. and Marron Co., Ltd. Established Santouka Kamei Canada Foods Ltd.
- 2010** Reorganized. Abolished Fuel Department, Energy Division, Housing Environment Department, Office Support Department and Financial Services Department. Newly established Corporate Sales Division, Residential Division and Construction Materials Division. Renamed Gas Station Department, Energy Division to Carlife Division. Acquired shares of Mito Pharmacy Co., Ltd., Sanko Progress Mabis Corp., Higuchi Beikoku Co., Ltd. and Vintners Inc.
- 2011** Established Okinawa Office. Acquired shares of Aim Co., Ltd. Established Agri Corporation. Acquired shares of Imei (Exim) Pte. Ltd.
- 2012** Established KC Central Trading Co., Ltd. Acquired shares of Fitness Promotion Co., Ltd. Acquired shares of Wanoba Group, Inc. (presently Kamei North America Co., Ltd.) and Avis Group, Inc.(presently KC Central Trading Co., Ltd.).
- 2013** Celebrated the 110th anniversary of its foundation. Acquired shares of Oasih's Co., Ltd. Started mega solar power generation business. Acquired shares of MCS Co., Ltd.
- 2014** Introduced new corporate IT system.
- 2015** Acquired shares of Lee Huat Yap Kee Pte. Ltd. and 3 group companies (LHYK Marine Pte. Ltd., Translub Marine Pte. Ltd., Lee Huat Yap Kee & Co. Pte. Ltd.). Opened the Sendai Umino-Mori Aquarium (joint project by six companies including Mitsui & Co., Ltd., Kamei Crop. and Yokohama Hakkeijima Inc., as well as the Organization for Promoting Urban Development).
- 2016** Acquired naming rights for Sendai City gymnasium. (Kamei Arena Sendai)
- 2017** Acquired shares of Sun-Eight Trading Co., Ltd. Acquired shares of Kodama Co., Ltd. and Angelina Co., Ltd.
- 2018** Acquired shares of M2 Medical Co., Ltd.(presently Kamei Pharmacy Tohoku Co., Ltd.).
- 2020** Acquired shares of Kamei Vietnam Joint Stock Company and 3 group companies.
- 2021** Acquired shares of Eastern Green Marketing Pte. Ltd. and Alamanda Singapore Pte. Ltd. Acquired shares of Daiei Trading Co., Inc.
- 2022** Acquired shares of Tachibana ADM Co., Ltd. (currently Tachibana Material Co., Ltd.) The Construction Materials Division was renamed the Construction Division, and the Pharmacy Division was renamed the Healthcare Division.
- 2023** Celebrated the 120th anniversary of its foundation. Fumi-yuki Kamei was inaugurated as Chairman and CEO. Akio Kamei was inaugurated as the sixth president. Acquired shares of Nagatoshi Produce USA, LLC (currently Nagatoshi Produce Co., Ltd.).
- 2024** Established New Business Development Office.

Kamei Profile

| | | | |
|-----------------------------|--|---|---------------------|
| Name : | Kamei Corporation | Representative Director, Chairman and CEO : | Fumi-yuki Kamei |
| Started : | July 1903 | Representative Director, President : | Akio Kamei |
| Established : | December 29,1932 | Executive Director, Head of Sales : | Seietsu Sato |
| Capitalized at : | ¥ 8,132 million | Executive Director, Head of Administration, | |
| Sales : | Consolidated: ¥551,245 million (period ending March 31, 2023) Non-consolidated: ¥348,767 million | Corporate Planning and Affiliates : | Toru Aihara |
| Employees : | Consolidated: 5,610 (as of March 31, 2023) Non-consolidated: 2,108 | Director, Senior Advisor : | Junichi Kamei |
| Head Office : | 3-1-18 Kokubuncho, Aoba-ku, Sendai, Miyagi, Japan 980-8583 | Director : | Jinichi Abe |
| Contact : | T: 81-22-264-6111 F: 81-22-264-6020 | Outside Director : | Masafumi Omachi |
| Branch Offices : | 24 | Outside Director : | Seiichi Mitsui |
| Regional Offices : | 1 | Outside Director : | Chieko Kurabayashi |
| Representative Offices : | 46 | Standing Audit & Supervisory Board Member : | Masayuki Sasaki |
| Gas Stations : | 277 (Directly managed: 77, Dealers: 200) | Outside Audit & Supervisory Board Member : | Hiroyasu Sayama |
| Oil Depots: | 34 | Outside Audit & Supervisory Board Member : | Yoshihiro Takahashi |
| Gas Terminals : | 15 | Managing Officer, Fukushima Branch Manager : | Naoki Washiashi |
| Automobile LPG Stations : | 4 | Managing Officer, Carlife Division Manager : | Heiji Torii |
| Food Distribution Centers : | 2 | Managing Officer, Healthcare Division Manager : | Satoshi Sato |
| Pharmacies : | 111 (Directly managed: 57, Affiliated: 54) | Managing Officer, Tokyo Branch Manager : | Satoshi Yamada |
| Green Mart Supermarkets : | 1 | Managing Officer, New Business Development | |
| Affiliated Companies : | 77 (Domestic: 50, Overseas: 27) | Office Manager : | Hiroshi Kikuchi |
| | | Managing Officer, Miyagi Branch Manager : | Tetsuya Aizawa |
| | | Senior Adviser : | Shogo Kamei |

(as of April 1, 2024)

Organization Chart



Financial Report (consolidated)



Business Partners

Corporate Sales Division

- ENEOS Corporation ●Tohoku Natural Gas Co., Inc. ●IHI Corporation ●Sumico Lubricant Co., Ltd.
- Morita Miyata Corporation ●Hatsuta Seisakusho Co., Ltd. ●Kao Professional Services Co., Ltd. ●Nippon Paper Crecia Co., Ltd.
- Mitsubishi Heavy Industries, Ltd. ●Tokuyama Corporation ●Sanko Co., Ltd. ●Eaton Filtration Ltd. ●Sanchemipha Co., Ltd.
- Mitsubishi Gas Chemical Co., Inc. ●Miura Co., Ltd. ●Japan Alcohol Trading Co., Ltd. ●Kärcher Japan Co., Ltd.
- Mitsubishi Electric Corporation ●Morimatsu Industry Co., Ltd. ●Torishima Pump Mfg. Co., Ltd. ●E-Plan Co., Ltd.
- Tatsuno Corporation ●Tokico System Solutions, Ltd. ●JFE Container Co., Ltd. ●Euglena Co., Ltd. ●Fujitsu Japan Limited
- NEC Corporation ●Okamura Corporation ●Oliver Corporation ●Kokuyo Marketing Co., Ltd.
- PLUS Corporation ●FUJIFILM Business Innovation Corporation ●Oriental Carpet Mills, Ltd. ●TENDO Co., Ltd.
- Nippon Telegraph and Telephone East Corporation ●NTT Docomo, Inc. ●Askul Corporation
- Tokio Marine & Nichido Fire Insurance Co., Ltd. ●Sompō Japan Insurance Inc. ●AIG General Insurance Co., Ltd.
- Mitsui Sumitomo Insurance Co., Ltd. ●Aioi Nissay Dowa Insurance Co., Ltd. ●Chubb Insurance ●Aflac Life Insurance Japan Ltd.
- The Tokio Marine & Nichido Life Insurance Co., Ltd. ●Sompō Himawari Life Insurance Inc.
- Mitsui Sumitomo Aioi Life Insurance Co., Ltd. ●NN Life Insurance Co., Ltd. ●Sony Life Insurance Co., Ltd.

Residential Division

- ENEOS Corporation ●Eneos Globe Corporation ●Astomos Energy Corporation ●Gyxis Corporation
- Iwatani Corporation ●Japan Gas Energy Corporation ●Tohoku Natural Gas Co., Inc. ●Yazaki Enagy System Corporation
- Katsura Co., Ltd. ●Toyo Keiki Co., Ltd. ●Chugoku Kogyo Co., Ltd. ●Rinnai Corporation ●Lixil Corporation
- Cleanup Corporation ●Noritz Corporation ●TOTO Ltd. ●Panasonic Commercial Equipment Systems Co., Ltd.
- Panasonic Housing Solutions Co., Ltd. ●Panasonic Marketing Japan Co.,Ltd. ●Mitsubishi Electric Corporation
- Mitsubishi Electric Living Environment Systems Corporation ●Corona Corporation ●Paloma Co., Ltd.
- Toclas Corporation ●Takara Standard Co., Ltd. ●KYOCERA Corporation ●Daikin HVAC Solution Tohoku Corporation
- Best Parts Ltd. ●Hitachi Global Life Solutions, Inc. ●Nasluck Co., Ltd. ●Purpose Co., Ltd.
- Yanmar Energy System Co., Ltd. ●Denso Solution Corporation ●YKK AP Inc. ●Chofu Seisakusho Co., Ltd. ●Housetec Inc.
- Toyo Kitchen Style Co., Ltd. ●Toyotomi Co., Ltd. ●Fujitsu General Ltd. ●KMEW Co., Ltd.
- Takagi Co., Ltd.

Carlife Division

- ENEOS Corporation ●Eneos Trading Co.,Ltd. ●Bridgestone Corporation ●Sumitomo Rubber Industries, Ltd.
- The Yokohama Rubber Co., Ltd. ●ORIX Auto Corporation ●Tatsuno Corporation ●Tokico System Solutions, Ltd.
- Tominaga Co. ●Nihon Kensetsu Co.,Ltd. ●Asahi ETIC Co., Ltd. ●Toaresin Co.,Ltd. ●Sharp Marketing Japan Corporation
- Comota Co., Ltd ●Daifuku Plusmore Co., Ltd. ●TakeuchiBeauty Co.,Ltd. ●MK SEIKO Co., Ltd.
- KeePer Technical Laboratory Co., Ltd. ●Banzai, Ltd. ●Iyasaka Co., Ltd. ●Avtec Co., Ltd. ●Muraki Corporation
- Sompō Japan Insurance Inc. ●Tokio Marine & Nichido Fire Insurance Co., Ltd. ●Mitsui Sumitomo Insurance Co., Ltd.

Food Division

- Kirin Brewery Co., Ltd. ●Asahi Breweries, Ltd. ●Suntory Spirits Ltd. ●Mercian Corporation
- Takara Shuzo Co., Ltd. ●Gekkeikan Sake Co., Ltd. ●Nihonsakari Co., Ltd. ●Ozeki Corporation
- Sawanotsuru Co., Ltd. ●Tatsuuma-Honke Brewing Co., Ltd. ●Saura Co., Ltd. ●Ichinokura Co., Ltd.
- Dewazakura Sake Brewery Co., Ltd. ●Kirinzan Brewery Co., Ltd. ●Kikusui Sake Co., Ltd. ●Ryozeiki Co., Ltd.
- Akita Meijou Co., Ltd. ●Kirin Beverage Co., Ltd. ●Suntoryfoods Co., Ltd. ●Asahi Soft Drinks Co., Ltd.
- National Federation of Agricultural Cooperative Associations (Zen-noh) ●Otsuka Pharmaceutical Co., Ltd. ●J-oil Mills, Inc.
- Rikyu Corporation ●Kisuke Corporation

Construction Division

- Nippon Steel Corporation ●JFE Steel Corporation ●Tokyo Steel Co., Ltd. ●Marubeni Itochu Sumisho Techno Steel Inc.
- MM&KENZAI Corporation ●ITEC Corporation ●Nippon Steel Coated Sheet Corporation ●Nippon Steel Metal Products Co.,Ltd.
- JFE Metal Products & Engineering Inc. ●Taiheiyō Cement Corporation ●Clion Co., Ltd. ●Sumitomo Metal Mining Siporex Co., Ltd.
- Nozawa Corporation ●Tohokupole Corporation ●Kyowa Concrete Industry Co., Ltd. ●Nikkei Engineering Co., Ltd.
- Nihon Mesalite Industry Co., Ltd. ●Secondary concrete product manufacturers ●K-wa kai member companies

Healthcare Division

- Vital-Net, Inc. ●Suzuken Co., Ltd. ●Mediceo Corporation ●Alfresa Corporation ●Toho Pharmaceutical Co., Ltd.
- KSK Co., Ltd. ●Tohoku Alfresa Corporation ●Takazono Corporation ●Yuyama Co., Ltd.

Banks

- MUFG Bank, Ltd. ●The 77 Bank, Ltd. ●The Kita-Nippon Bank, Ltd.
- Mitsubishi UFJ Trust and Banking Corporation ●Sumitomo Mitsui Banking Corporation
- Mizuho Bank, Ltd. ●The Sendai Bank, Ltd. ●The Toho Bank, Ltd. ●The Joyo Bank, Ltd.
- The Bank of Iwate, Ltd. ●The Aomori Bank, Ltd. ●The Yamagata Bank, Ltd.

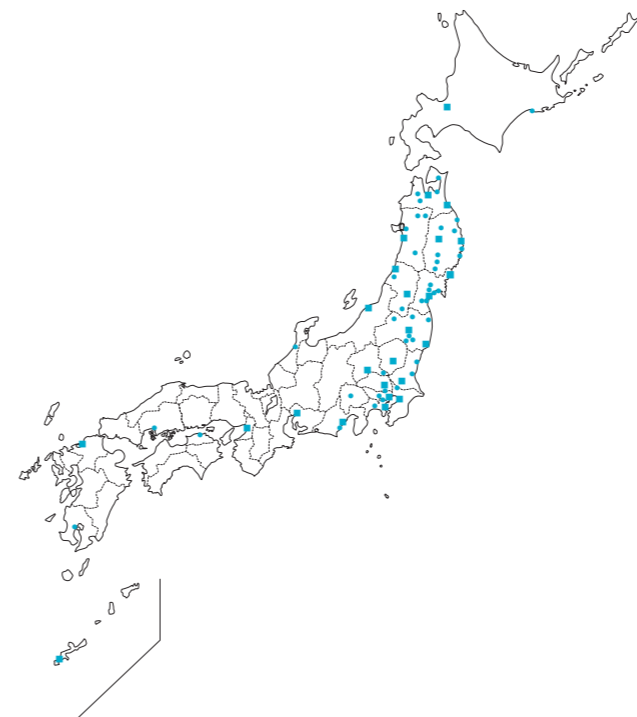
Domestic Network

Head Office

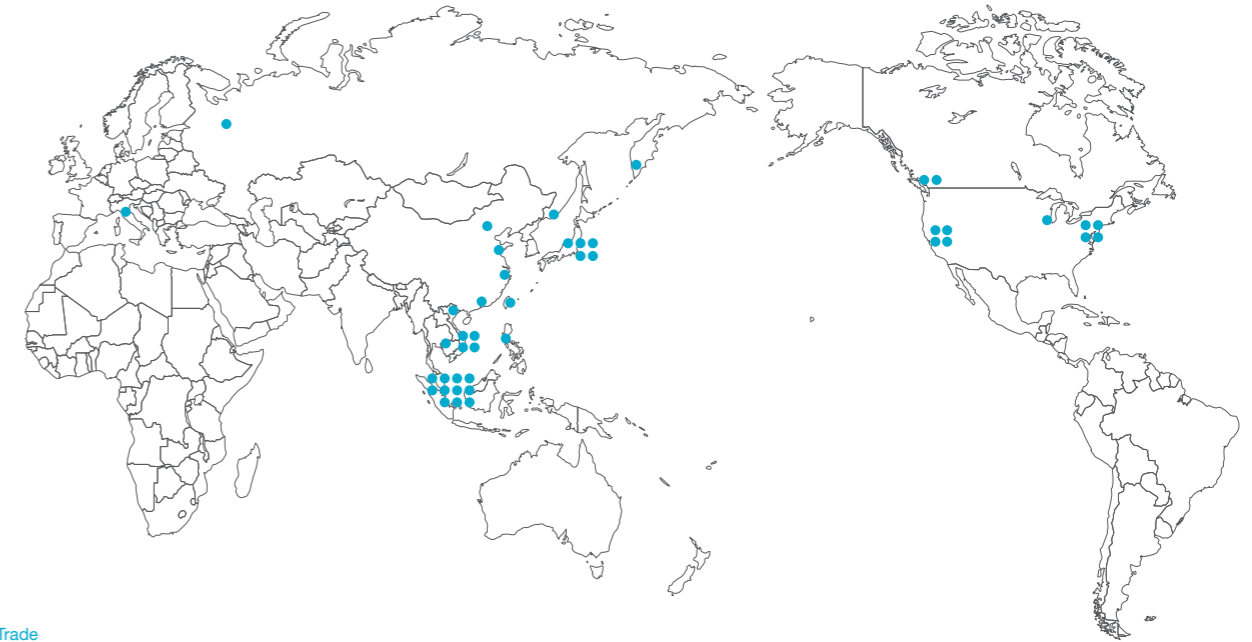
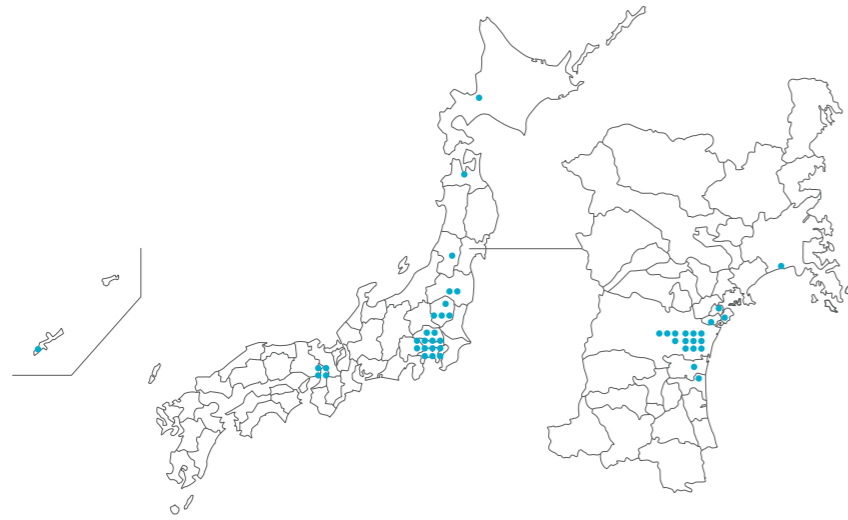
- 3-1-18 Kokubuncho, Aoba-ku, Sendai, Miyagi 980-8583
- ☎ 022-264-6111
- Corporate Sales Division ☎ 022-264-6115
- Residential Division ☎ 022-264-6140
- Carlife Division ☎ 022-264-6067
- Food Division ☎ 022-264-6125
- Construction Division ☎ 022-264-6141
- Healthcare Division ☎ 022-264-6069
- General Administration Division ☎ 022-264-6111
- Corporate Planning Office ☎ 022-264-6007
- New Business Development Office ☎ 022-264-6202
- Corporate Auditor ☎ 022-264-6126
- Secretarial Office ☎ 022-264-6003
- Sales Promotion Office ☎ 022-264-6128
- Okinawa Office ☎ 098-860-3871
- Customer Service ☎ 0120-88-6067

Branch/Representative Offices

- Hokkaido Branch Office ☎ 011-807-4760
- Kushiro Representative Office ☎ 0154-23-7540
- Aomori Branch Office ☎ 017-736-8410
- Hirosaki Representative Office ☎ 0172-88-8577
- Mutsu Representative Office ☎ 0175-33-8034
- Goshogawara Representative Office ☎ 0173-35-3322
- Noheji Representative Office ☎ 0175-64-5771
- Hachinohe Branch Office ☎ 0178-41-2311
- Kuji Representative Office ☎ 0194-53-3197
- Iwate Branch Office ☎ 019-639-2277
- Numakunai Representative Office ☎ 0195-62-3331
- Kitakami Representative Office ☎ 0197-68-3875
- Ichinoseki Representative Office ☎ 0191-25-5112
- Iwazumi Representative Office ☎ 0194-25-4694
- Mizusawa Representative Office ☎ 0197-22-5860
- Sanriku Branch Office ☎ 0193-62-3611
- Kamaishi Representative Office ☎ 0193-55-4014
- Yamada Representative Office ☎ 0193-82-2036
- Miyagi Branch Office ☎ 022-239-1111
- Ishinomaki Representative Office ☎ 0225-22-2125
- Shiogama Representative Office ☎ 022-362-3111
- Iwanuma Representative Office ☎ 0223-25-2466
- Furukawa Representative Office ☎ 0229-22-2250
- Akenodaira Representative Office ☎ 022-358-9108
- Sennan Representative Office ☎ 0224-53-5545
- Kesennuma Branch Office ☎ 0226-22-4200
- Akita Branch Office ☎ 018-823-2171
- Oodate Representative Office ☎ 0186-48-4774
- Yokote Representative Office ☎ 0182-32-7724
- Gojome Representative Office ☎ 018-875-5130
- Kazuno Representative Office ☎ 0186-37-3315
- Yamagata Branch Office ☎ 023-681-6121
- Yonezawa Representative Office ☎ 0238-37-2714
- Shinjo Representative Office ☎ 0233-22-1719
- Shonai Branch Office ☎ 0234-24-0411
- Tsuruoka Representative Office ☎ 0235-22-1272
- Fukushima Branch Office ☎ 024-932-5431
- Fukushima Representative Office ☎ 024-552-1311
- Shirakawa Representative Office ☎ 0248-23-2715
- Sukagawa Representative Office ☎ 0248-72-0351
- Ishikawa Representative Office ☎ 0247-26-5511
- Aizu Representative Office ☎ 0241-21-9677
- Iwaki Branch Office ☎ 0246-58-8011
- Soso Representative Office ☎ 0244-25-7067
- Niigata Branch Office ☎ 025-201-6521
- Tokyo Branch Office ☎ 03-6228-3481
- Ibaraki Branch Office ☎ 029-855-9310
- Hitachi Representative Office ☎ 0294-23-2980
- Mito Representative Office ☎ 029-305-5701
- Tochigi Branch Office ☎ 028-612-2911
- Gunma Branch Office ☎ 027-327-3733
- Ota Representative Office ☎ 0276-60-5255
- Saitama Branch Office ☎ 048-871-7722
- Tama Representative Office ☎ 042-571-2630
- Kawaguchi Representative Office ☎ 048-286-8000
- Chiba Branch Office ☎ 043-203-3211
- Kashiwa Representative Office ☎ 04-7197-7637
- Kanagawa Branch Office ☎ 045-784-1686
- Kawasaki Representative Office ☎ 044-874-0551
- Atsugi Representative Office ☎ 046-229-8777
- Shizuoka Branch Office ☎ 054-254-6147
- Yaizu Representative Office ☎ 054-629-1711
- Yamanashi Representative Office ☎ 055-226-6755
- Chubu Branch Office ☎ 052-684-4712
- Hokuriku Representative Office ☎ 076-237-0760
- Kansai Branch Office ☎ 06-6885-5131
- Takamatsu Representative Office ☎ 087-811-7341
- Hiroshima Representative Office ☎ 082-223-7020
- Kyusyu Branch Office ☎ 092-713-8029
- Kagoshima Representative Office ☎ 099-226-2280
- Okinawa Office ☎ 098-860-3871



Affiliated Companies



Energy

| | | |
|---|--|--------------|
| Tohoku Gas Corporation | 50 Mukaibara, Odakura, Nishigo-mura, Nishishirakawa-gun, Fukushima, 961-8061 | 0248-27-1188 |
| Tochigi LPG Co., Ltd. | 1-14-13 Murasakizuka, Otawara, Tochigi 324-0058 | 0287-22-2853 |
| Pacific Co., Ltd. | 4 Kitanaganuma, Shimonogo, Iwanuma, Miyagi 989-2421 | 0223-22-4424 |
| Shinshirakawa LPG Supply Center Co., Ltd. | 2-63 Nakanoyama, Shirakawa, Fukushima 961-0844 | 0248-31-0465 |
| Saito Gas Co., Ltd. | 3-16-17 Kusushi, Aomori, Aomori 038-0013 | 017-781-8266 |

Food

| | | |
|--------------------------------|--|--------------|
| Higuchi Beikoku Co., Ltd. | 167 Joko, Konosu, Saitama 365-0024 | 048-542-1706 |
| Ikemitsu Enterprises Co., Ltd. | 3-18-19 Toranomon, Minato-ku, Tokyo 105-0001 | 03-6459-0480 |
| Wing Ace Corporation | 3-18-19 Toranomon, Minato-ku, Tokyo 105-0001 | 03-5404-7533 |
| Vintners Inc. | 3-18-19 Toranomon, Minato-ku, Tokyo 105-0001 | 03-5405-8368 |
| Agri Corporation | 6-86-1 Onoecho, Naka-ku, Yokohama, Kanagawa 231-0015 | 045-212-5588 |
| Sun-Eight Trading Co., Ltd. | 1-1-1 Minamiaoyama, Minato-ku, Tokyo 107-0062 | 03-5414-1570 |
| Kodama Co., Ltd. | 1-3-9 Keihinjima, Ota-ku, Tokyo 143-0003 | 03-5755-2311 |
| Angelina Co., Ltd. | 1-3-9 Keihinjima, Ota-ku, Tokyo 143-0003 | |

Construction

| | | |
|------------------------------|---|--------------|
| Kamei Engineering Co., Ltd. | 12-14 Futsukamachi, Aoba-ku, Sendai, Miyagi 980-0802 | 022-264-9559 |
| Tachibana Material Co., Ltd. | 5-157-1 Hattori-Kotobukicho, Toyonaka, Osaka 561-0857 | 06-6865-1610 |
| Oumi Kikou Co., Ltd. | 5-157-1 Hattori-Kotobukicho, Toyonaka, Osaka 561-0857 | 06-6865-1615 |

Automotive

| | | |
|--|--|--------------|
| Sendai Toyopet Co., Ltd. | 2-8-1 Nigatake, Miyagino-ku, Sendai, Miyagi 983-0036 | 022-232-1111 |
| Yamagata Toyopet Co., Ltd. | 5-5-2 Iidanishi, Yamagata, Yamagata 990-9588 | 023-641-1441 |
| Kamei Auto Corporation | 8-65 Nishimachi, Rokuchonome, Wakabayashi-ku, Sendai, Miyagi 984-0011 | 022-288-6751 |
| Kamei Auto Hokkaido Corporation | 18-1-36 Higashi Ichijo, Tsukisamu, Toyohira-ku, Sapporo, Hokkaido 062-0051 | 011-855-7400 |
| Orix Rent-A-Car Kamei Co., Ltd. | 2-10-28 Honcho, Aoba-ku, Sendai, Miyagi 980-0014 | 022-227-0543 |
| Toyota Sendai Rental & Leasing Co., Ltd. | 2-8-1 Nigatake, Miyagino-ku, Sendai, Miyagi 983-0036 | 022-232-0100 |
| Senzan Technocraft Co., Ltd. | 60 Sawame, Tako-aza, Natori, Miyagi 981-1221 | 022-384-3145 |
| James Sendai Co., Ltd. | 3-5 Minamimachi, Rokuchonome, Wakabayashi-ku Sendai, Miyagi 984-0013 | 022-390-7311 |

Pet

| | | |
|---------------------------|---|--------------|
| Oshimaono Shoji Co., Ltd. | 215 Doyo, Ohiramachi, Tochigi, Tochigi 329-4402 | 0282-22-4188 |
| Pet&i Co., Ltd. | 215 Doyo, Ohiramachi, Tochigi, Tochigi 329-4402 | 0282-22-2355 |
| Tomson Corporation | 215 Doyo, Ohiramachi, Tochigi, Tochigi 329-4402 | 0282-25-3211 |

Pharmacy

| | | |
|---------------------------------|---|--------------|
| Endo Pharmacy Co., Ltd. | 3-1-9 Sakurada, Kuki, Saitama 340-0203 | 0480-53-3901 |
| Marron Co., Ltd. | 3-1-3 Nishikatakura, Hachioji, Tokyo 192-0917 | 042-632-0225 |
| Mito Pharmacy Co., Ltd. | 5-36-7 Takasago, Katsushika-ku, Tokyo 125-0054 | 03-3607-2563 |
| Aim Co., Ltd. | 6-1-1 Nishinakajima, Yodogawa-ku, Osaka 532-0011 | 06-6885-5180 |
| MCS Co., Ltd. | 102-3 Jinbuncho, Yao, Osaka 581-0067 | 072-925-7728 |
| Kamei Pharmacy Tohoku Co., Ltd. | 3-1-18 Kokubuncho, Aoba-ku, Sendai, Miyagi 980-0803 | 022-264-6164 |
| Oasih's Co., Ltd. | 3-1-18 Kokubuncho, Aoba-ku, Sendai, Miyagi 980-0803 | 022-264-6235 |

Broadcasting

| | | |
|--|--|--------------|
| Miyagi Television Broadcasting Co., Ltd. | 1-5-33 Hinodemachi, Miyagino-ku, Sendai, Miyagi 983-8611 | 022-236-3411 |
| Miyagi Television Service Co., Ltd. | 1-5-33 Hinodemachi, Miyagino-ku, Sendai, Miyagi 983-8611 | 022-284-8057 |

Other

| | | |
|--|---|--------------|
| Kamei Physical Distribution Services Co., Ltd. | 2-7-36 Sakae, Tagajo, Miyagi 985-0833 | 022-365-3411 |
| Fuji Oil Service Co., Ltd. | 1-1 Kaminonagare, Minatohama-aza, Shichigahama-machi, Miyagi-gun, Miyagi 985-0813 | 022-362-8965 |
| Shiogama Petroleum Disaster Prevention Co., Ltd. | 3-13-5 Teizandori, Shiogama, Miyagi 985-0011 | 022-367-4181 |
| Kamei Shoji Corporation | 3-1-18 Kokubuncho, Aoba-ku, Sendai, Miyagi 980-0803 | 022-268-7311 |
| Persol Tempstaff Kamei Corporation | 1-1-20 Kakyoin, Aoba-ku, Sendai, Miyagi 980-0013 | 022-266-3171 |
| Mitsumoto Shoji Co., Ltd. | 4-37-18 Fujimidai, Kunitachi, Tokyo 186-0003 | 042-571-5111 |
| Fitness Promotion Co., Ltd. | 2-5-5 Nishi, Naha, Okinawa 900-0036 | 098-868-0758 |
| Chronos Medical Devices, Inc. | 2-22-17 Kameido, Koto-ku, Tokyo 136-0071 | 03-6807-0811 |
| 141 Co., Ltd. | 2-15-1 Honcho, Aoba-ku, Sendai, Miyagi 980-0014 | 022-268-0141 |
| Ishinomaki Port Petroleum Distribution Assoc. | 3-11-7 Sakanamachi, Ishinomaki, Miyagi 986-0022 | 0225-96-8741 |

Trade

| | | |
|--------------------------------------|---|-----------------|
| Kamei Proact Corporation | 3-18-19 Toranomon, Minato-ku, Tokyo 105-0001 | 03-6450-1234 |
| Milan Office | 7 Via G. Labus, Milano Italy 20147 | 39-02-41-81-85 |
| KC Central Trading Co., Ltd. | 3-7-2, Irifune, Chuo-ku, Tokyo 104-0042 | 03-5244-9778 |
| Saint Plaza Co., Ltd. | 3-18-19 Toranomon, Minato-ku, Tokyo 105-0001 | 03-6809-2660 |
| Sanko Progress Mabis Corporation | 20-7 Samoncho, Shinjuku-ku, Tokyo 160-0017 | 03-6386-3501 |
| Moscow Rep. Office | Ordzhonikidze Street 11, Building 11, 2 Floor (225), Moscow, Russia 115419 | 7-499-650-5332 |
| Vladivostok Rep. Office | 5 Ul., Ogaryova, Vladivostok, Primorskiy kray, Russia 690014 | 7-4232-499-062 |
| Petropavlovsk-Kamchatsky Rep. Office | 35 Ul. Leningradskaya, Room 510, Petropavlovsk-Kamchatsky, Russia 683003 | 7-4152-41-21-32 |
| Hong Kong Branch Office | #405, Park Tower, 15 Austin Rd., Tsim Sha Tsui, Kowloon, Hong Kong, China | 852-2317-4045 |
| Shanghai Rep. Office | Room 1202, Tower A, The Place, No.100 Zunyi Road, Changning District, Shanghai, China, 200051 | 86-21-62368928 |
| Bangkok Rep. Office | 1402/1, 14th Floor, Vasu 1 Building, 1 Soi Sukhumvit 25, Sukhumvit Rd., Klongtoey-Nua, Wattana, Bangkok, Thailand 10110 | 66-2-258-5701 |
| Manila Rep. Office | Suite 6011, 6th Floor, Golden Rock Building, 168 Salcedo St., Legaspi Village, Makati, 1227, Philippines | 63-2-8714-6152 |
| Hanoi Rep. Office | Unit 503, 5th Floor, V-Tower, 649 Kim Ma Street, Ba Dinh District, Hanoi, Vietnam | 84-24-3823-3677 |
| Singapore Branch Office | 7 Temasek Boulevard, #04-02B Suntec Tower One, Singapore 038987 | 65-6221-9500 |

Overseas affiliates

| | | |
|---|---|------------------|
| Kamei North America Co., Ltd. | 1815 W. 213th Street, Suite 230, Torrance, CA, 90501, USA | 1-310-782-1900 |
| Canada Branch Office | 558 West Broadway Street Vancouver, BC V5Z 1E | 1-604-565-1770 |
| Mitsuba Corporation | 1815 W. 213th Street, Suite 235, Torrance, CA, 90501, USA | 1-310-782-6800 |
| YNU, LLC | 595 River Rd. Edgewater, NJ, 07020, USA | 1-323-267-8822 |
| Daiei Trading Co., Inc. | 14-50 128th Street, College Point, NY, 11356, USA | 1-718-539-8100 |
| Daiei Trading-Chicago-Co., Inc. | 360 Randy Road, Carol Stream, IL, 60188, USA | 1-630-752-0089 |
| Nagatoshi Produce Co., Ltd. | 340 North Myers Street, Suite B, Los Angeles, CA, 90033, USA | 1-323-267-8822 |
| Central Boeki U.S.A., Ltd. | 39-34 43rd Street, Long Island City, NY, 11104, USA | 1-718-729-8966 |
| Central Boeki Calif., Ltd. | 19801 Rancho Way, Suite A, Rancho Dominguez, CA, 90220, USA | 1-310-323-1817 |
| Katagiri & Co., Inc. | 224 E. 59th St., New York, NY, 10022, USA | 1-212-755-3566 |
| Santouka Kamei Canada Foods Ltd. | 558 West Broadway Street Vancouver, BC V5Z 1E | |
| Kamei Singapore Pte. Ltd. | 7 Temasek Boulevard, #04-02B Suntec Tower One, Singapore 038987 | 65-6221-9500 |
| Imei (Exim) Pte. Ltd. | No. 3, Kaki Bukit Road 2, #01-04 Eunon Warehouse Complex, Singapore 417837 | 65-6743-0122 |
| Lee Huat Yap Kee Pte. Ltd. | 28 Penjuru Lane, Singapore 609218 | 65-6368-8998 |
| LHYK Marine Pte. Ltd. | 28 Penjuru Lane, Singapore 609218 | 65-6368-8998 |
| Translub Marine Pte. Ltd. | 28 Penjuru Lane, Singapore 609218 | 65-6368-8998 |
| Lee Huat Yap Kee & Co. Pte. Ltd. | 28 Penjuru Lane, Singapore 609218 | 65-6368-8998 |
| Kamei Energy Singapore Pte. Ltd. | 28 Penjuru Lane, Singapore 609218 | 65-6368-8998 |
| Eastern Green Marketing Pte. Ltd. | 1 Buroh Lane, #02M-03, Singapore 618292 | 65-6774-7225 |
| Alamanda Singapore Pte. Ltd. | 21 Wholesale Centre, #01-140, Pasir Panjang Wholesale Centre, Singapore 110021 | 65-6774-7225 |
| Santouka Kamei Singapore Pte. Ltd. | 7 Temasek Boulevard, #04-02B Suntec Tower One, Singapore 038987 | 65-6221-9500 |
| Kamei Vietnam Joint Stock Company | 384/8 Huynh Van Banh, Ward 14, Phu Nhuan District, Ho Chi Minh City, Vietnam | |
| Phu & Em Trading Service Co., Ltd. | 489 Xo Viet Nghe Tinh, Ward 26, Binh Thanh District, Ho Chi Minh City, Vietnam | 84-28-3898-4890 |
| Dai Minh Service And Trading Co., Ltd. | 305 Vinh Hung quarter, Vinh Hung Ward, Hoang Mai District, Hanoi City, Vietnam | 84-24-3665-8828 |
| Bao Chau International Distribution Co., Ltd. | 256, Street 2 Thang 9, Hoa Cuong Bac Ward, Hai Chau District, Da Nang City, Vietnam | 84-236-378-9459 |
| Qingdao Saint Sports Co., Ltd. | YuHuangLing Industrial Zone, Xizhaizitoucun, Xiazhuang St., Chengyang District, Qingdao, Shandong Province, China | 86-532-8775-4015 |
| Sanko Mabis (Beijing) Corporation | Room 19-02, Citic Building, Jian-Guo-Men-Wai Avenue #19, Beijing, China | 86-10-6501-8557 |
| Tachibana Material Taiwan Co., Ltd. | 14 F, No. 51, Sec. 2, Keelung Rd., Xinyi Dist., Taipei City 110502, Taiwan | |

(as of April 1, 2024)



Corporate Philosophy

As a general trading company with strong local community ties, we constantly strive to support people in their daily lives as we ourselves develop and grow.

Corporate Principles

1. Above all, Trust
2. Service to Others
3. Spirit of Cooperation
4. Bold Initiative
5. Developing a Brighter Future

Corporate Slogan

Supporting daily lives, enabling brighter futures